

TUNUNAK, ALASKA

AL-10177 (FAA)

24193

WAAS CH 86845 W34A	APP CRS 320°	Rwy Idg 3300 TDZE 62 Apt Elev 62
--	------------------------	---

RNAV (GPS) RWY 34

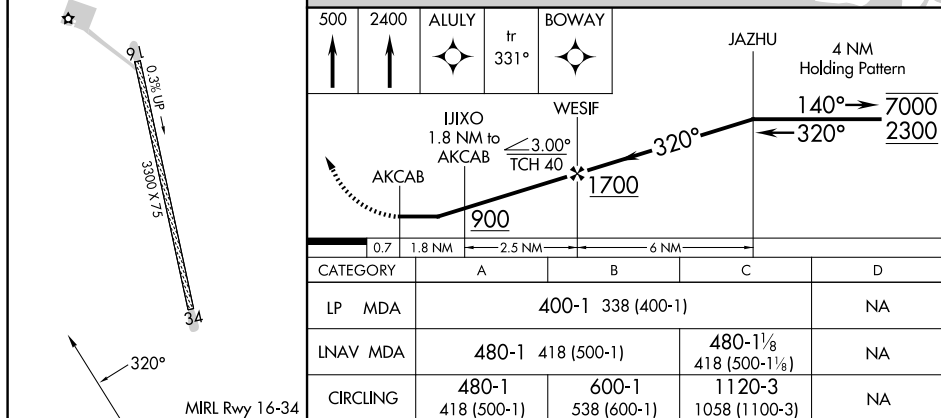
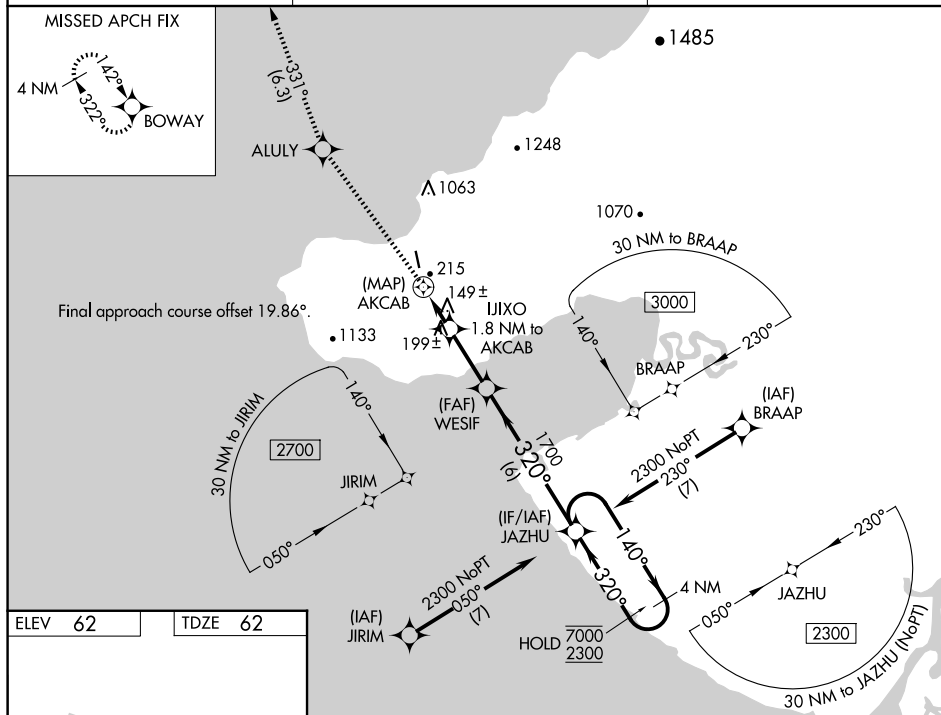
TUNUNAK (4KA) (POKA)

RNP APCH - GPS.

- T** Circling NA east of Rwy 16-34. Rwy 34 helicopter visibility reduction below $\frac{3}{4}$ SM NA. When local altimeter setting not received, use Toksook Bay altimeter setting and increase all MDAs 20 feet and LNAV visibility Cat C $\frac{1}{8}$ SM.

MISSED APPROACH: Climb to 500, then climb to 2400 direct **ALULY** then on track 331° to **BOWAY** and hold.

AWOS-3P 118.25	ANCHORAGE CENTER 125.2 372.0	CTAF 122.9
--------------------------	--	----------------------



TUNUNAK, ALASKA
Orig 11JUL24

TUNUNAK (4KA) (POKA)
RNAV (GPS) RWY 34

60°34'N-165°15'W

AK, 07 AUG 2025 to 02 OCT 2025

AK, 07 AUG 2025 to 02 OCT 2025