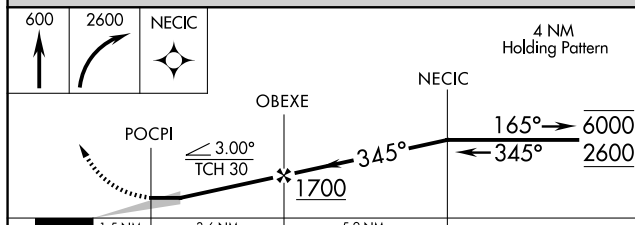
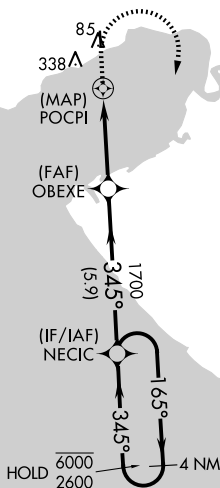
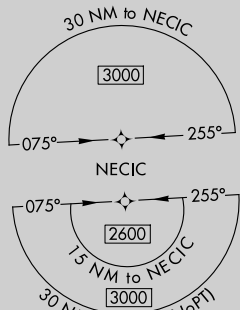


RNAV (GPS) RWY 34
TOKSOOK BAY (00K)(PA00)

T Circling NA west of Rwy 16-34. When local altimeter setting not received,
A use Mekoryuk altimeter setting and increase all MDAs 100 feet.

MISSED APPROACH: Climb to 600 then climbing right turn to 2600 direct NECIC and hold.



CATEGORY	A	B	C	D
LP MDA	340-1 $\frac{3}{4}$	269 (300-1 $\frac{3}{4}$)		NA
LNAV MDA	420-1 $\frac{3}{4}$	349 (400-1 $\frac{3}{4}$)		NA
C CIRCLING	460-1 $\frac{3}{4}$ 389 (400-1 $\frac{3}{4}$)	540-1 $\frac{3}{4}$ 469 (500-1 $\frac{3}{4}$)		NA