

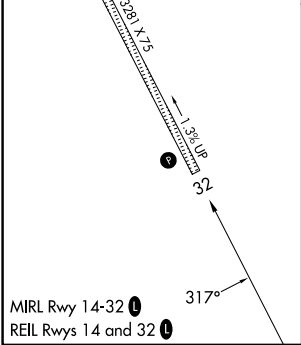
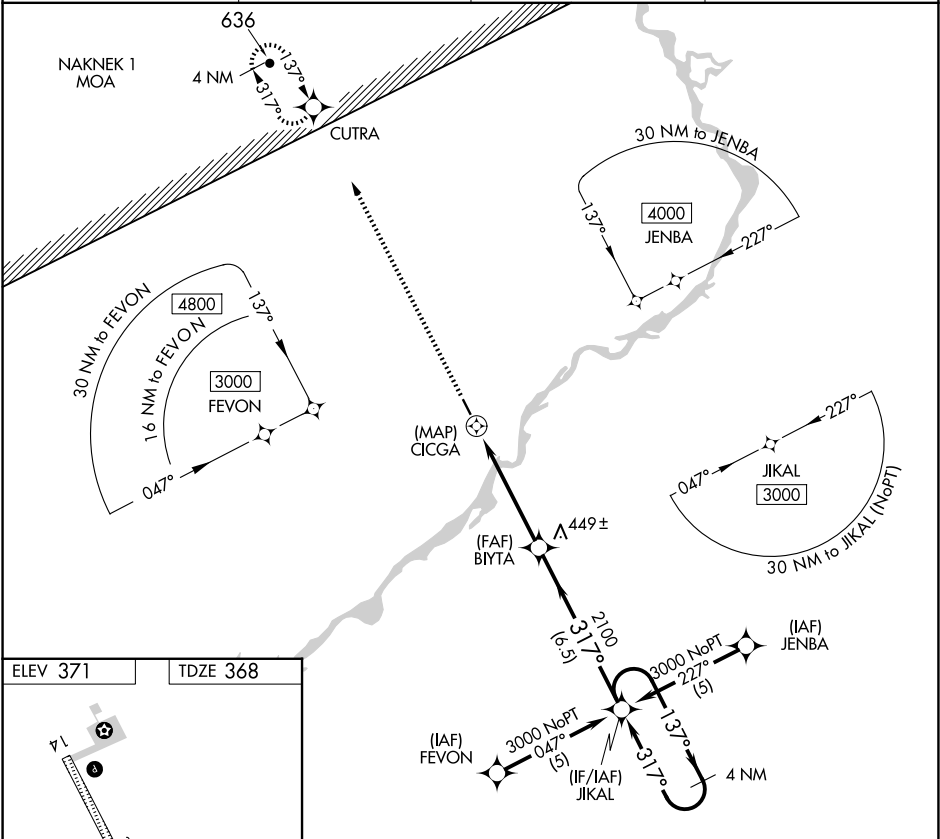
APP CRS	Rwy Idg	3281
317°	TDZE	368
	Apt Elev	371



RNAV (GPS) RWY 32

NEW STUYAHOK (KNW) (PANW)

RNP APCH - GPS.	MISSED APPROACH: Climb to 3000 direct CUTRA and hold.
<div><div>▼</div><div>▲</div></div> When local altimeter setting not received, use JZZ/PAJZ altimeter setting and increase all MDAs 60 feet. Procedure NA at night.	

AWOS-3P 120.275	ANCHORAGE CENTER 132.75 282.35	DILLINGHAM RADIO 122.55	CTAF 122.9
--------------------	-----------------------------------	----------------------------	---------------



3000	CUTRA	VGSI and descent angles not coincident (VGSI Angle 3.00/TCH 25).		4 NM
				Holding Pattern
		0.8 NM to CICGA	BIYA	317°
		CICGA	2100	137°
		$\leq 3.05^\circ$ TCH 35		3000
		0.5	0.8	317°
		4.1 NM		
		6.5 NM		
CATEGORY	A	B	C	D
LNNAV MDA	760-1	392 (400-1)	NA	
CIRCLING	780-1 409 (500-1)	840-1 469 (500-1)	NA	