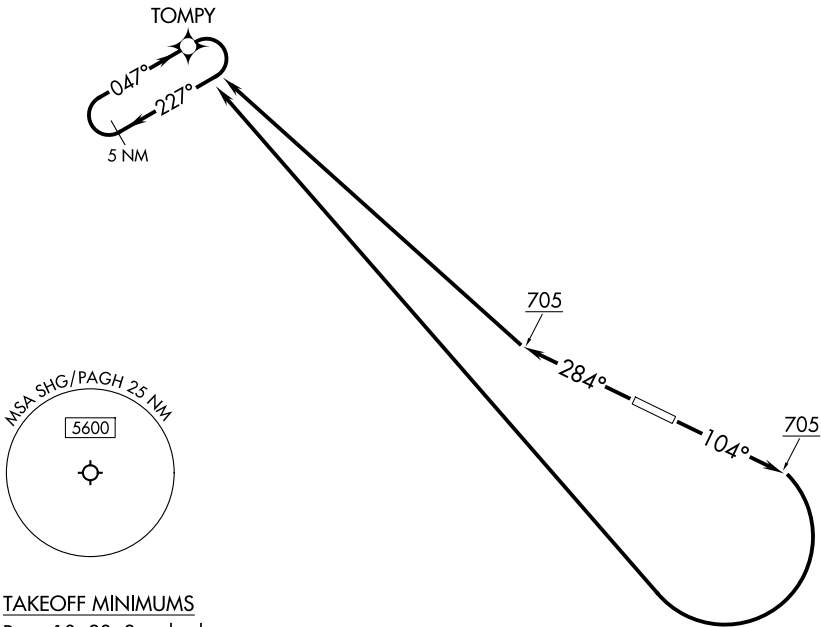


RNAV 1 - GPS.

ANCHORAGE CENTER  
119.2  
CTAF  
122.7



TAKEOFF MINIMUMS  
Rwys 10, 28: Standard.

TAKEOFF OBSTACLE NOTES

- Rwy 10: Light poles beginning 9' from DER, 20' left of centerline, up to 2' AGL/207' MSL.  
Light poles beginning 10' from DER, 20' right of centerline, up to 2' AGL/207' MSL.  
Vegetation, trees beginning 58' from DER, 277' right of centerline, up to 219' MSL.  
Trees, vehicles on road beginning 103' from DER, 111' right of centerline, up to 237' MSL.  
Trees beginning 838' from DER, 29' left of centerline, up to 234' MSL.  
Tree 1180' from DER, 589' left of centerline, 241' MSL.  
Tree 1218' from DER, 608' left of centerline, 255' MSL.
- Rwy 28: Light poles beginning 9' from DER, 20' right of centerline, up to 3' AGL/176' MSL.  
Light poles beginning 9' from DER, 19' left of centerline, up to 2' AGL/176' MSL.

NOTE: Chart not to scale.

DEPARTURE ROUTE DESCRIPTION

- TAKEOFF RUNWAY 10: Climb on heading 104° to 705, then right turn direct TOMPY, thence. . .
- TAKEOFF RUNWAY 28: Climb on heading 284° to 705, then direct TOMPY, thence. . . .
- . . . continue climb in TOMPY holding pattern to cross TOMPY fix at or above MEA for direction of flight before proceeding on course.