




WAAS CH 40126 W28A	APP CRS 284°	Rwy Idg 4001 TDZE 205 Apt Elev 205
--	------------------------	---

RNAV (GPS) RWY 28
SHUNGNK(SHG)(PAGH)

RNP APCH - GPS.

 Rwy 28 helicopter visibility reduction below 1 SM NA.
 Straight-in Rwy 28 NA at night, Circling Rwy 28 NA
 -35°C at night.

MISSED APPROACH: Climb to 5000 direct HODMO and on track 314° to TOMPY and hold, continue climb-in-hold to 5000.

AWOS-3P 118.525	ANCHORAGE CENTER 119.2	KOTZEBUE RADIO 122.0	CTAF 122.7
---------------------------	----------------------------------	--------------------------------	----------------------

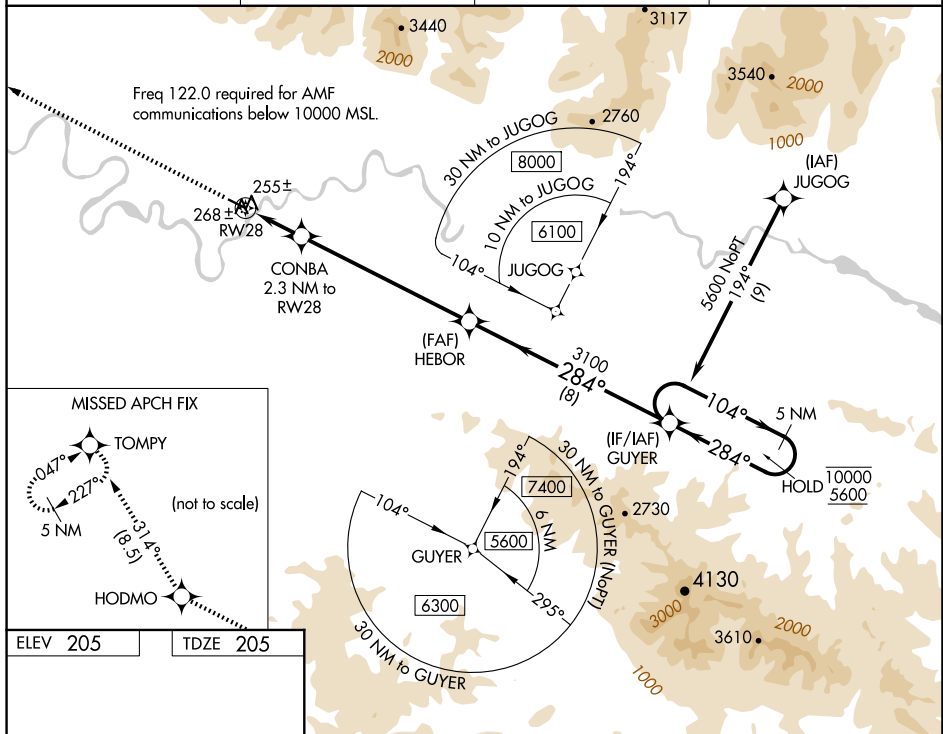


Diagram illustrating the RW28 instrument approach for RWY 28. The approach path is shown with a 284° heading, a 104° turn to 10000 ft, and a 284° turn to 5600 ft. Key points include CONBA (2.3 NM to RW28), HEBOR, GUYER, and TOMPY. The approach is categorized as A, B, and C. The diagram also shows the 3100 ft and 960 ft altitudes, and the 3.00° TCH 40.

CATEGORY	A	B	C	D
LP MDA	540-1	335 (400-1)		NA
LNAV MDA	540-1	335 (400-1)		NA
C CIRCLING	600-1 395 (400-1)	660-1 455 (500-1)	660-1½ 455 (500-1½)	NA

MIRL Rwy 10-28

SHUNGNAC, ALASKA
Amdt 4 31OCT24

66°53'N-157°10'W

SHUNGNK (SHG)(PAGH)
RNAV (GPS) RWY 28