

SLEETMUTE, ALASKA

AL-10170 (FAA)

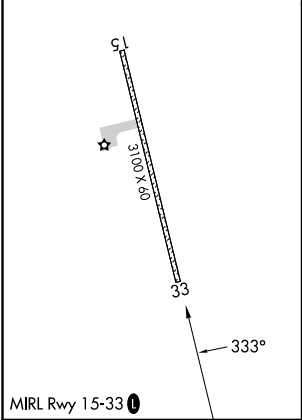
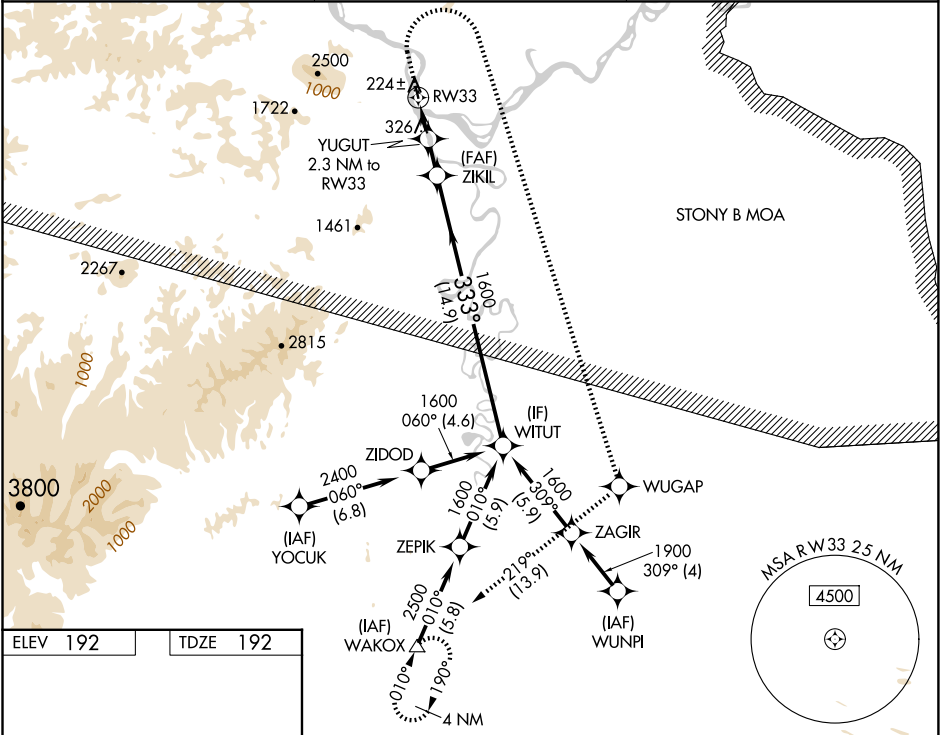
25107

WAAS CH 45743 W33A	APP CRS 333°	Rwy Idg TDZE Apt Elev	3100 192 192
--	------------------------	-----------------------------	---

RNAV (GPS) RWY 33
SLEETMUTE (SLQ)(P)ASL)

RNP APCH.	MISSED APPROACH: Climb to 600, then climbing right turn to 3000 direct WUGAP, then track 219° to WAKOX and hold.
<div><div><div></div><div></div><div></div></div><div><div>AK</div><div>-36°C</div></div></div> <div>Circling NA west of Rwy 15-33. Procedure NA at night. Rwy 33 helicopter visibility reduction below 1 SM NA.</div>	

AWOS-3P 134.85	ANCHORAGE CENTER 128.5 379.9	UNICOM 122.8 (CTAF) 0
--------------------------	--	--



600	3000	WUGAP	tr 219°	WAKOX	ZIKIL	WITUT
↑	↻	✧	✧	△		
YUGUT 2.3 NM to RW33						
RW33						
960						
333°						
1600						
1600						
2.3 NM						
2 NM						
14.9 NM						
CATEGORY	A	B	C	D		
LP MDA	580-1	388 (400-1)	NA			
LNAV MDA	900-1	708 (800-1)	NA			
CIRCLING	900-1	960-1	NA			
	708 (800-1)	768 (800-1)				

SLEETMUTE, ALASKA
Orig 31DEC20

61°42'N-157°10'W

SLEETMUTE (SLQ)(P)ASL)
RNAV (GPS) RWY 33

AK, 07 AUG 2025 to 02 OCT 2025

AK, 07 AUG 2025 to 02 OCT 2025