

APP CRS 073°	Rwy Ldg	3280
	TDZE	57
	Apt Elev	57

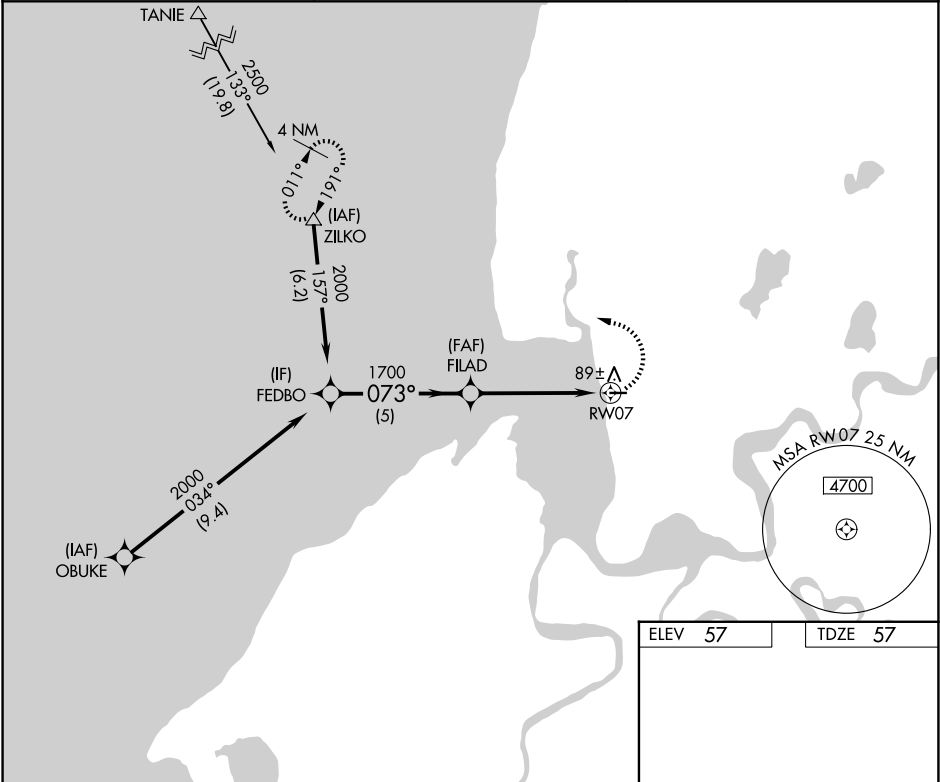
RNAV (GPS) RWY 7

PILOT POINT (PNP)(PAPN)

DME/DME RNP-0.3 NA. When local altimeter setting not received, use King Salmon altimeter setting and increase all MDA 180 feet.

MISSED APPROACH: Climbing left turn to 2500 direct ZILKO and hold.

AWOS-3P 118.375	ANCHORAGE CENTER 132.9 288.3	CTAF 122.9 0
--------------------	---------------------------------	-----------------



Visual Segment - Obstacles.

2500

ZILKO

2000

FEDBO

073°

1700

FILAD

RW07

5 NM

5 NM

CATEGORY	A	B	C	D
LNAV MDA	520-1	463 (500-1)	NA	
CIRCLING	600-1	543 (600-1)	NA	

MIRL Rwy 7-25 0

ELEV 57

TDZE 57

073°

0.6% UP→

3280 X 75

25