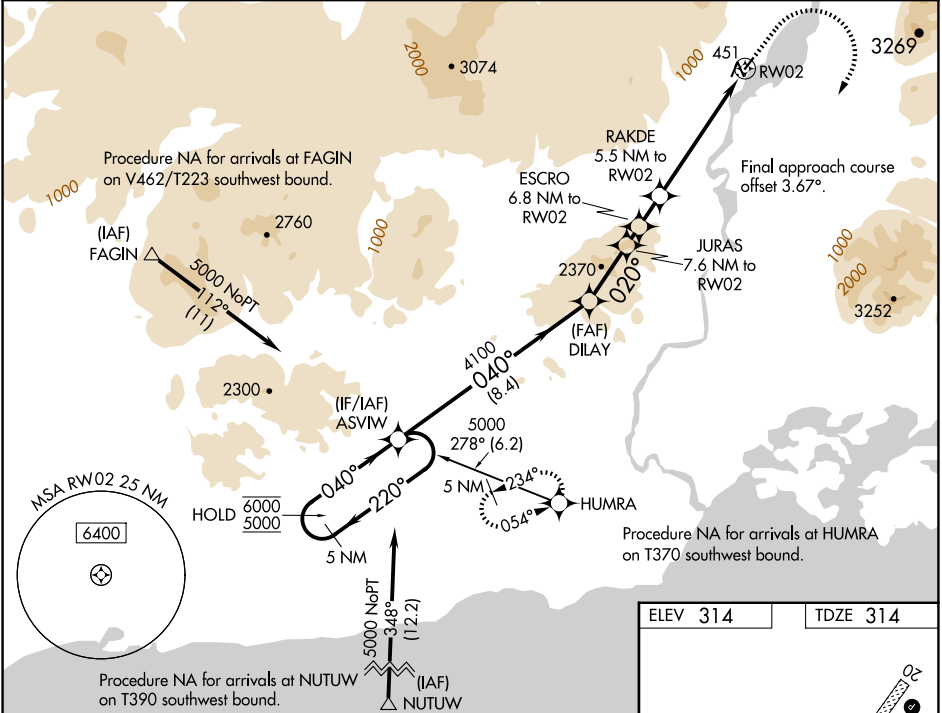


APP CRS	Rwy Idg	2800
020°	TDZE	314
	Apt Elev	314

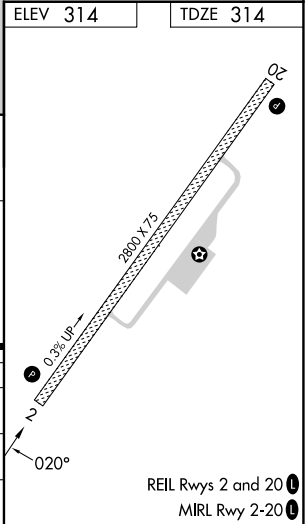
RNAV (GPS) RWY 2
NONDALTON (5NN) (PANO)

RNP APCH - GPS.	MISSED APPROACH: Climb to 1400 then climbing right turn to 5000 direct HUMRA and hold, continue climb-in-hold to 5000. *Missed approach requires minimum climb of 216 feet per NM to 3100.
▼ Rwy 2 helicopter visibility reduction below 1 SM NA. ❄ -13°C Circling NA west of Rwy 2-20. Straight-In Rwy 2 NA at night, Circling Rwy 2 NA at night. Use Iliamna altimeter setting: when not received, procedure NA.	

III/PAIL ASOS 134.95	ANCHORAGE CENTER 118.8	KENAI RADIO 122.2	CTAF 122.9
-------------------------	---------------------------	----------------------	---------------



CATEGORY	A	B	C	D
LNAV MDA*	1380-1¼ 1066 (1100-1¼)	1380-1½ 1066 (1100-1½)	NA	
LNAV MDA	1660-1¼ 1346 (1400-1¼)	1660-1½ 1346 (1400-1½)	NA	
❏ CIRCLING	1660-1¼ 1346 (1400-1¼)	1660-1½ 1346 (1400-1½)	NA	



AK, 07 AUG 2025 to 02 OCT 2025

AK, 07 AUG 2025 to 02 OCT 2025