

ANCHORAGE CENTER
118.8
KENAI RADIO
122.2

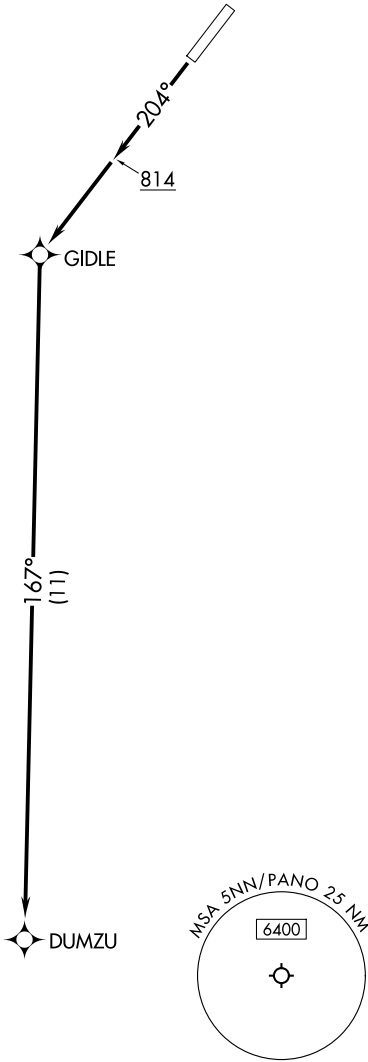
RNAV 1 - GPS.

TAKEOFF MINIMUMS

Rwy 2: NA - Obstacles.
Rwy 20: Standard with minimum climb
of 443' per NM to 2600.

TAKEOFF OBSTACLE NOTES

Rwy 20: Trees 3' from DER, 313' left of centerline, 50' AGL/323' MSL.
Trees 41' from DER, 235' right of centerline, 50' AGL/382' MSL.
Trees 96' from DER, 192' left of centerline, 50' AGL/346' MSL.
Trees 134' from DER, 356' right of centerline, 50' AGL/395' MSL.
Trees beginning 189' from DER, 15' left of centerline, up to 50' AGL/359' MSL.
Trees beginning 228' from DER, 49' right of centerline, up to 50' AGL/405' MSL.
Trees beginning 749' from DER, 39' right of centerline, up to 50' AGL/415' MSL.
Trees beginning 1176' from DER, 281' right of centerline, up to 50' AGL/418' MSL.
Trees beginning 1269' from DER, 95' right of centerline, up to 50' AGL/425' MSL.
Trees beginning 1379' from DER, 25' left of centerline, up to 50' AGL/382' MSL.
Trees beginning 1604' from DER, 337' right of centerline, up to 50' AGL/428' MSL.
Trees beginning 1697' from DER, 30' right of centerline, up to 50' AGL/431' MSL.
Tower, trees, tank beginning 2032' from DER, 21' right of centerline, up to 75' AGL/451' MSL.
Trees beginning 2141' from DER, 34' left of centerline, up to 50' AGL/388' MSL.
Trees beginning 2646' from DER, 142' right of centerline, up to 50' AGL/454' MSL.
Trees beginning 2980' from DER, 77' right of centerline, up to 50' AGL/457' MSL.
Trees beginning 3073' from DER, 198' right of centerline, up to 50' AGL/464' MSL.
Trees beginning 3167' from DER, 12' right of centerline, up to 50' AGL/467' MSL.
Trees beginning 3594' from DER, 375' right of centerline, up to 50' AGL/474' MSL.
Trees beginning 3687' from DER, 68' right of centerline, up to 50' AGL/480' MSL.
Trees beginning 4115' from DER, 124' right of centerline, up to 50' AGL/484' MSL.
Trees beginning 4971' from DER, 663' right of centerline, up to 50' AGL/490' MSL.
Trees beginning 5064' from DER, 719' right of centerline, up to 50' AGL/497' MSL.
Trees beginning 1.1 NM from DER, 1920' right of centerline, up to 50' AGL/500' MSL.



NOTE: Chart not to scale.

DEPARTURE ROUTE DESCRIPTION

TAKEOFF RUNWAY 20: Climb on heading 204° to 814, then direct GIDLE, then on track 167° to DUMZU, then on assigned route of flight and altitude.

AK, 07 AUG 2025 to 02 OCT 2025

AK, 07 AUG 2025 to 02 OCT 2025