

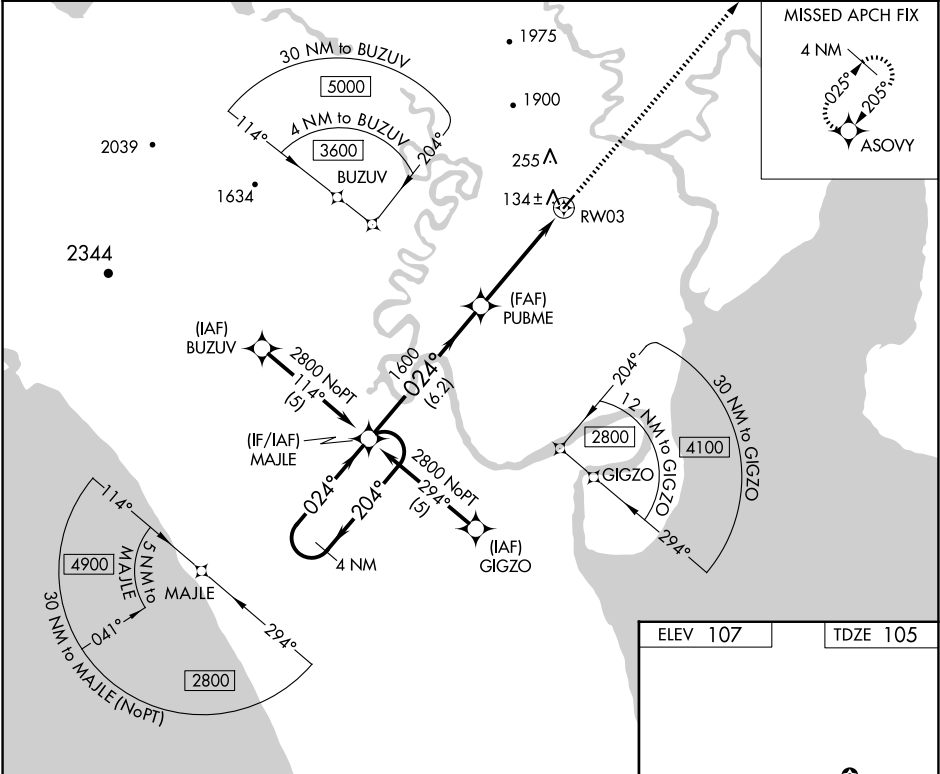
APP CRS	Rwy Idg	3300
024°	TDZE	105
	Apt Elev	107

RNAV (GPS) RWY 3  
MANOKOTAK (MBA) (PAMB)

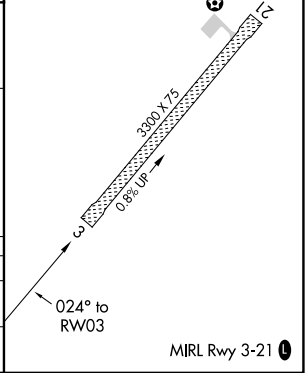
**⚠** Circling NA northwest of Rwy 3 and 21. DME/DME RNP-0.3 NA. VDP NA when using Dillingham altimeter setting. When local altimeter setting not received use Dillingham altimeter setting and increase all MDA 40 feet and LNAV Cat D visibility ¼ SM. Rwy 3 helicopter visibility below 1 SM NA.

MISSED APPROACH: Climb to 3600 direct ASOVY and hold.

AWOS-3P 120.625	ANCHORAGE CENTER 132.75 282.35	CTAF 122.9 <b>0</b>
--------------------	-----------------------------------	------------------------



<div>4 NM Holding Pattern</div> <div>MAJLE</div> <div>PUBME</div> <div>3600</div> <div>ASOVY</div>				
<div>2800 ← 204°</div> <div>024° →</div> <div>024°</div> <div>1600</div> <div>3.02° TCH 40</div> <div>0.9 NM to RW03</div> <div>RW03</div>				
<div>6.2 NM</div> <div>3.7 NM</div> <div>0.9</div>				
CATEGORY	A	B	C	D
LNAV MDA	400-1 295 (300-1)			
CIRCLING	540-1	560-1	560-1½	660-2
	433 (500-1)	453 (500-1)	453 (500-1½)	553 (600-2)



AK, 07 AUG 2025 to 02 OCT 2025

AK, 07 AUG 2025 to 02 OCT 2025