

WAAS CH <b>42714</b> <b>W07A</b>	APP CRS <b>068°</b>	Rwy Ldg TDZE <b>149</b> Apt Elev <b>149</b>
--	------------------------	---

RNAV (GPS) RWY 7

KOYUKUK (KYU) (PFKU)

RNP APCH-GPS.

▼

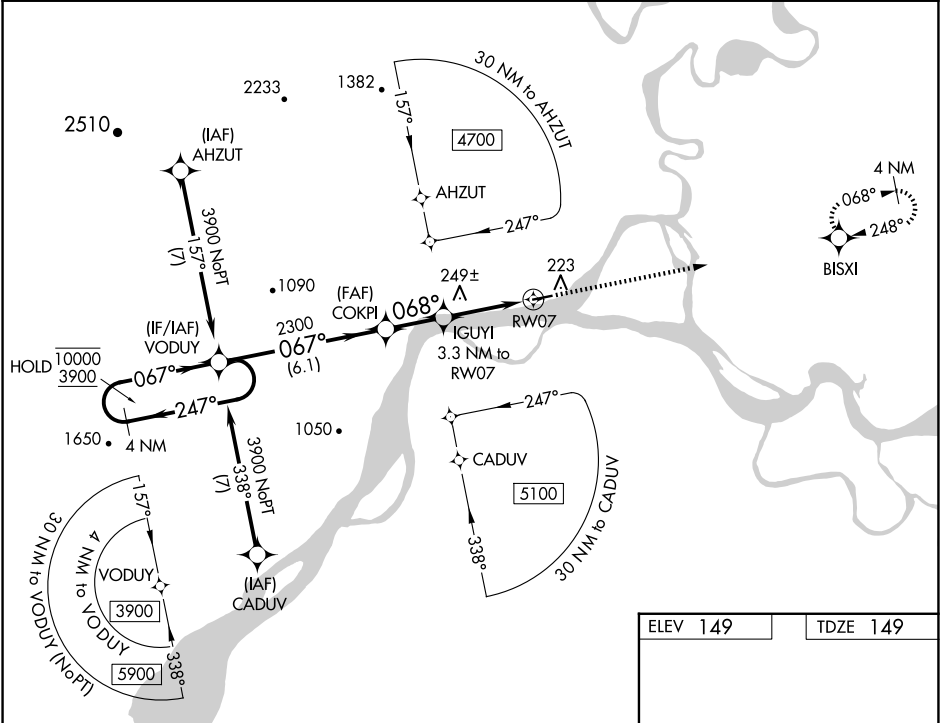
NA

❄️ -47°C

Circling Rwy 25 NA at night. Rwy 7 helicopter visibility reduction below ¾ SM NA. Use Galena altimeter setting; when not received, procedure NA.

MISSED APPROACH: Climb to 3700 direct BISXI and hold, continue climb-in-hold to 3700.

GAL/PAGA AWOS-3P <b>132.525</b>	ANCHORAGE CENTER <b>127.0 290.2</b>	CTAF <b>122.9 0</b>
------------------------------------	--	------------------------



VGSI and RNAV glidepath not coincident (VGSI Angle 4.00/TCH 29).

4 NM Holding Pattern

10000  
3900

GP 3.67°  
TCH 55

3700 BISXI

2300

IGUYI 3.3 NM to RW07

RW07

068°

6.1 NM

2.1 NM

3.3 NM

CATEGORY	A	B	C	D
LPV DA	520-1 371 (400-1)			NA
LNAV MDA	720-1 571 (600-1)		720-1½ 571 (600-1½)	NA
CIRCLING	720-1 571 (600-1)	900-1 751 (800-1)	1320-3 1171 (1200-3)	NA

REIL Rwy 7 0  
MIRL Rwy 7-25 0

AK, 07 AUG 2025 to 02 OCT 2025

AK, 07 AUG 2025 to 02 OCT 2025