

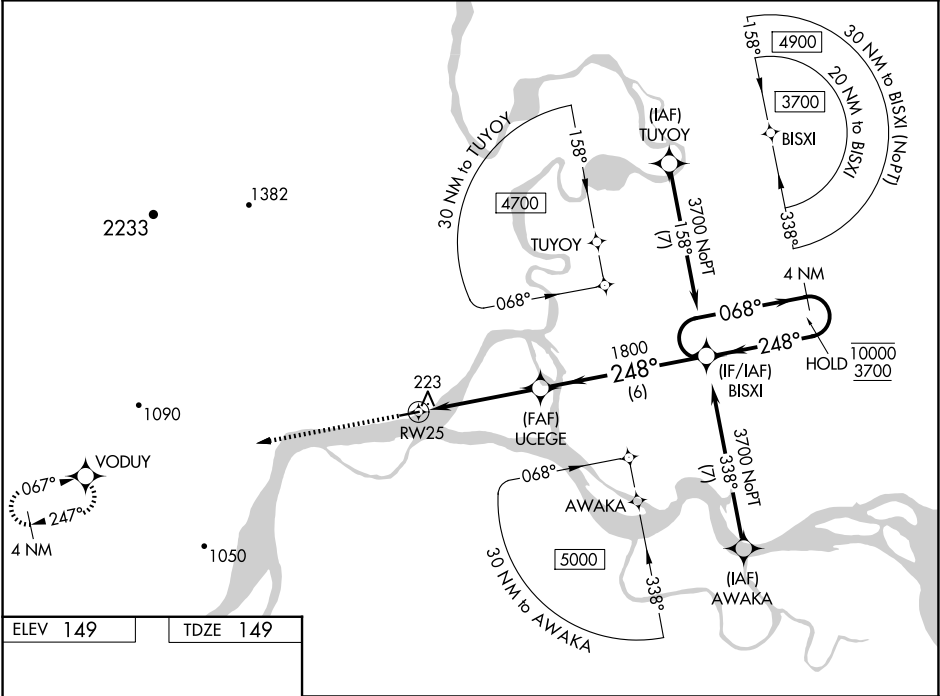
WAAS CH <b>99314</b> <b>W25A</b>	APP CRS <b>248°</b>	Rwy Ldg TDZE <b>149</b> Apt Elev <b>149</b>
--	------------------------	---

RNAV (GPS) RWY 25

KOYUKUK (KYU) (PFKU)

RNP APCH-GPS.	MISSED APPROACH: Climb to 4100 direct VODUY and hold, continue climb-in-hold to 4100.
▼ NA -47°C	Rwy 25 helicopter visibility reduction below 1 SM NA. Baro-VNAV NA. Use Galena altimeter setting; when not received, procedure NA. Straight-in Rwy 25 NA at night, Circling Rwy 25 NA at night.

GAL/PAGA AWOS-3P <b>132.525</b>	ANCHORAGE CENTER <b>127.0 290.2</b>	CTAF <b>122.9 0</b>
------------------------------------	--	------------------------



ELEV 149    TDZE 149

4100 VODUY

BISXI 4 NM Holding Pattern

GP 3.39°  
TCH 55

CATEGORY	A	B	C	D
LPV DA	471-1 322 (400-1)			NA
LNAV/VNAV DA	471-1 322 (400-1)			NA
LNAV MDA	720-1 571 (600-1)	720-1½ 571 (600-1½)		NA
CIRCLING	720-1 571 (600-1)	900-1 751 (800-1)	1320-3 1171 (1200-3)	NA

AK, 07 AUG 2025 to 02 OCT 2025

AK, 07 AUG 2025 to 02 OCT 2025