

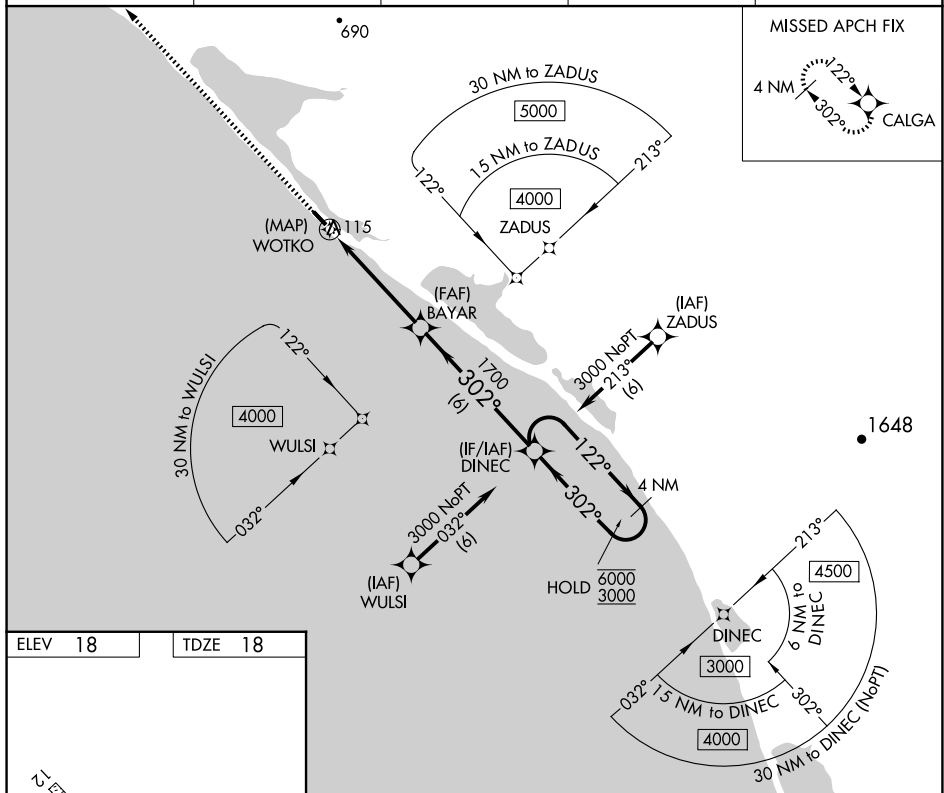
RNAV (GPS) RWY 30
KIVALINA (KVL)(PAVL)

T VDP NA with Noatak altimeter setting. When local altimeter setting not
A received, use Noatak altimeter setting and increase all MDAs 340 feet and
 visibility LNAV Cat C 1 SM, Circling Cat B $\frac{1}{4}$ SM, and Circling Cat C $1\frac{1}{4}$ SM.

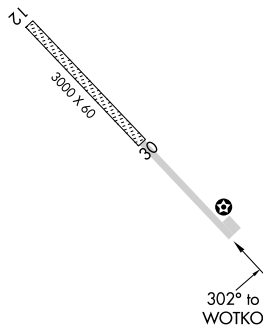
MISSED APPROACH: Climb to 3000 direct CALGA and hold, continue climb-in-hold to 3000.

UNICOM

122.8 (CTAF) L



TDZE 18

MIRL Rwy 12-30 **L**

Amdt 1C 08SEP22

67°44'N-164°34'W

KIVALINA (KVL)(PAVL)
RNAV (GPS) RWY 30

AK, 07 AUG 2025 to 02 OCT 2025