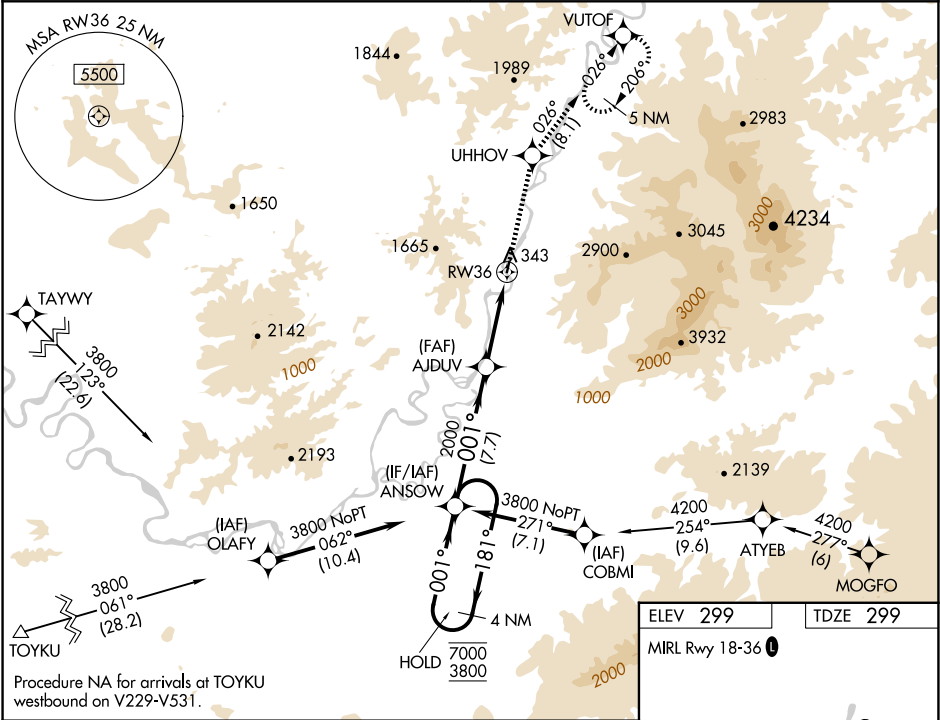


WAAS CH <b>86744</b> <b>W36A</b>	APP CRS <b>001°</b>	Rwy Idg <b>3381</b> TDZE <b>299</b> Apt Elev <b>299</b>
--	------------------------	---

**RNAV (GPS) RWY 36**  
HUGHES (HUS) (PAHU)

RNP APCH-GPS.		MISSED APPROACH: Climb to 5000 direct UHHOV and on track 026° to VUTOF and hold, continue climb-in-hold to 5000.
▼ NA	Rwy 36 helicopter visibility reduction below 1 SM NA. Procedure NA at night. Circling NA west of Rwy 18-36. Use Indian Mountain LRRS altimeter setting. When Indian Mountain LRRS altimeter setting not received, procedure NA.	

ANCHORAGE CENTER <b>124.6 352</b>	CTAF <b>122.9 0</b>
--------------------------------------	------------------------



4 NM Holding Pattern		5000	UHHOV	tr 026°	VUTOF
7000 ← 181° 3800 → 001°		AJDUV			
		3.00° TCH 40			
		RW36			
		2000			
		7.7 NM			
		5.2 NM			
CATEGORY	A	B	C	D	
LNAV MDA	1440-1¼ 1141 (1200-1¼)	1440-1½ 1141 (1200-1½)	1440-3 1141 (1200-3)	NA	
LP MDA	1440-1¼ 1141 (1200-1¼)	1440-1½ 1141 (1200-1½)	1440-3 1141 (1200-3)	NA	
CIRCLING	1440-1¼ 1141 (1200-1¼)	1440-1½ 1141 (1200-1½)	1580-3 1281 (1300-3)	NA	

