

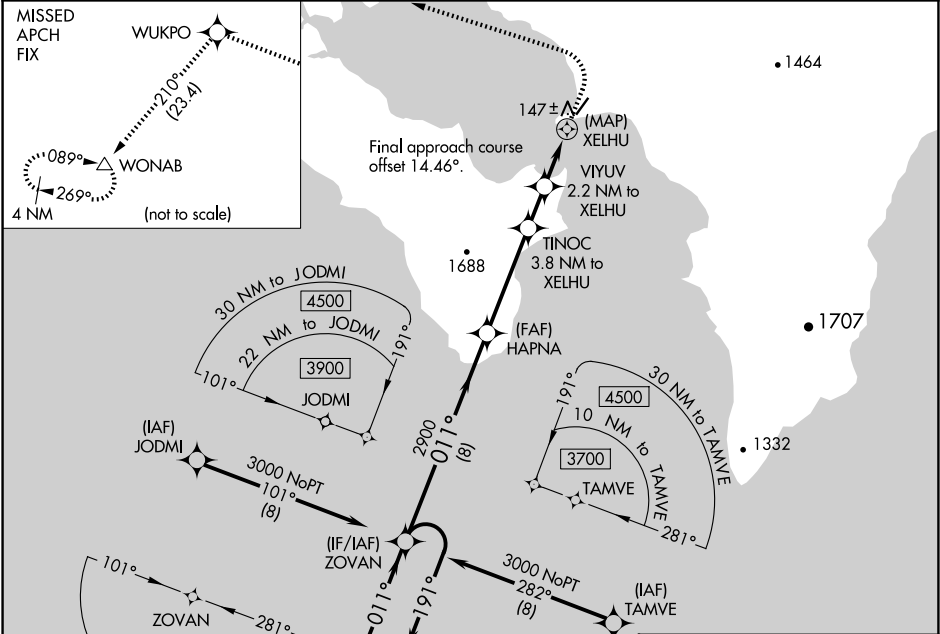
APP CRS	Rwy Idg	4000
011°	TDZE	62
	Apt Elev	62

RNAV (GPS) RWY 3

GOLOVIN (GLV) (PAGL)

RNP APCH.	MISSED APPROACH: Climb to 500 then climbing left turn to 3000 direct WUKPO and on track 210° to WONAB and hold.
<div><div></div><div></div></div> <div>Circling NA southeast of Rwy 3-21. Rwy 3 helicopter visibility reduction below ¾ SM NA.</div>	

AWOS-3P 135.75	ANCHORAGE CENTER 133.3 290.4	NOME RADIO 122.05	CTAF 122.9 0
-------------------	---------------------------------	----------------------	-----------------



ELEV 62	TDZE 62
---------	---------

VGSI and descent angles not coincident (VGSI Angle 3.00/TCH 26).				
4 NM Holding Pattern				
6000	3000	2900	1580	1040
8 NM 4 NM 1.6 NM 2.2 NM 0.7				
CATEGORY	A	B	C	D
LNVA MDA	400-1 338 (400-1)			
CIRCLING	460-1 398 (400-1)	520-1 458 (500-1)	680-1¾ 618 (700-1¾)	1000-3 938 (1000-3)