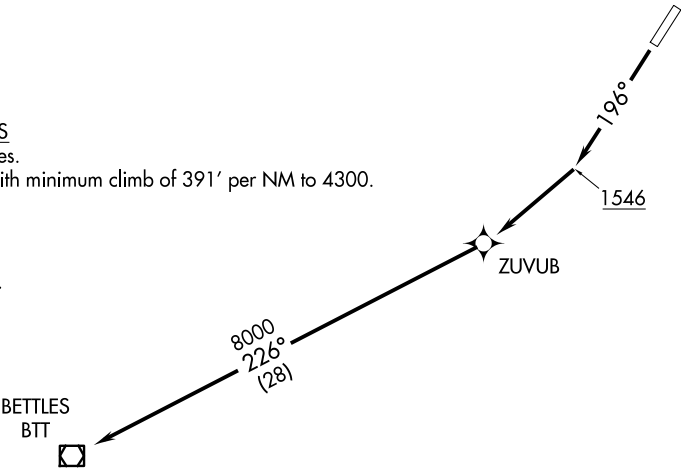


FAIRBANKS RADIO  
122.0  
ANCHORAGE CENTER  
124.6 352.0

TAKEOFF MINIMUMS

- Rwy 2: NA - obstacles.  
Rwy 20: Standard with minimum climb of 391' per NM to 4300.

NOTE: RNAV 1.  
NOTE: GPS required.



TAKEOFF OBSTACLE NOTE

- Rwy 20: Trees beginning 2' from DER, 144' left of centerline, up to 13' AGL/1042' MSL.  
Trees beginning 18' from DER, 130' right of centerline, up to 11' AGL/1042' MSL.  
Tree, vertical structure, secondary road beginning 93' from DER, 142' left of centerline, up to 46' AGL/1076' MSL. Tree 277' from DER, 272' right of centerline, 16' AGL/1043' MSL.  
Tree, vertical structure beginning 295' from DER, 423' left of centerline, up to 59' AGL/1089' MSL.  
Tree 310' from DER, 532' right of centerline, 19' AGL/1044' MSL. Tree 364' from DER, 466' right of centerline, 22' AGL/1048' MSL. Tree 399' from DER, 497' right of centerline, 28' AGL/1054' MSL. Tree 582' from DER, 510' right of centerline, 30' AGL/1055' MSL.  
Trees beginning 805' from DER, 519' right of centerline, up to 43' AGL/1070' MSL.  
Trees beginning 1031' from DER, 423' left of centerline, up to 65' AGL/1092' MSL.  
Trees beginning 1168' from DER, 274' right of centerline, up to 65' AGL/1088' MSL.  
Trees beginning 1538' from DER, 122' right of centerline, up to 69' AGL/1092' MSL.  
Trees beginning 1685' from DER, 136' left of centerline, up to 69' AGL/1096' MSL.  
Trees beginning 2345' from DER, 388' left of centerline, up to 73' AGL/1101' MSL.  
Tree 1.2 NM from DER, 2383' left of centerline, 12' AGL/1219' MSL.  
Tree and road beginning 1.2 NM from DER, 2436' left of centerline, up to 30' AGL/1249' MSL.  
Tree and road beginning 1.3 NM from DER, 2170' left of centerline, up to 30' AGL/1260' MSL.  
Road 1.3 NM from DER, 2480' left of centerline, 1250' MSL. Tree 1.3 NM from DER, 2415' left of centerline, 30' AGL/1257' MSL. Tree and road beginning 1.3 NM from DER, 1620' left of centerline, up to 38' AGL/1266' MSL. Trees beginning 1.8 NM from DER, 817' left of centerline, up to 63' AGL/1324' MSL. Tree 1.9 NM from DER, 468' left of centerline, 48' AGL/1329' MSL. Tree 2.1 NM from DER, 3488' left of centerline, 15' AGL/1343' MSL.  
Trees beginning 2.1 NM from DER, 3470' left of centerline, up to 23' AGL/1351' MSL.  
Tree 2.1 NM from DER, 3494' left of centerline, 19' AGL/1352' MSL.  
Terrain 2.1 NM from DER, 3794' left of centerline, 1369' MSL.  
Terrain and tree beginning 2.2 NM from DER, 3569' left of centerline, up to 1388' MSL.  
Tree and terrain beginning 2.2 NM from DER, 3556' left of centerline, up to 39' AGL/1420' MSL.

NOTE: Chart not to scale.

DEPARTURE ROUTE DESCRIPTION

TAKEOFF RUNWAY 20: Climb heading 196° to 1546, then climb direct ZUVUB, then on track 226° direct BTT VOR/DME, maintain 8000.

AK, 07 AUG 2025 to 02 OCT 2025

AK, 07 AUG 2025 to 02 OCT 2025