

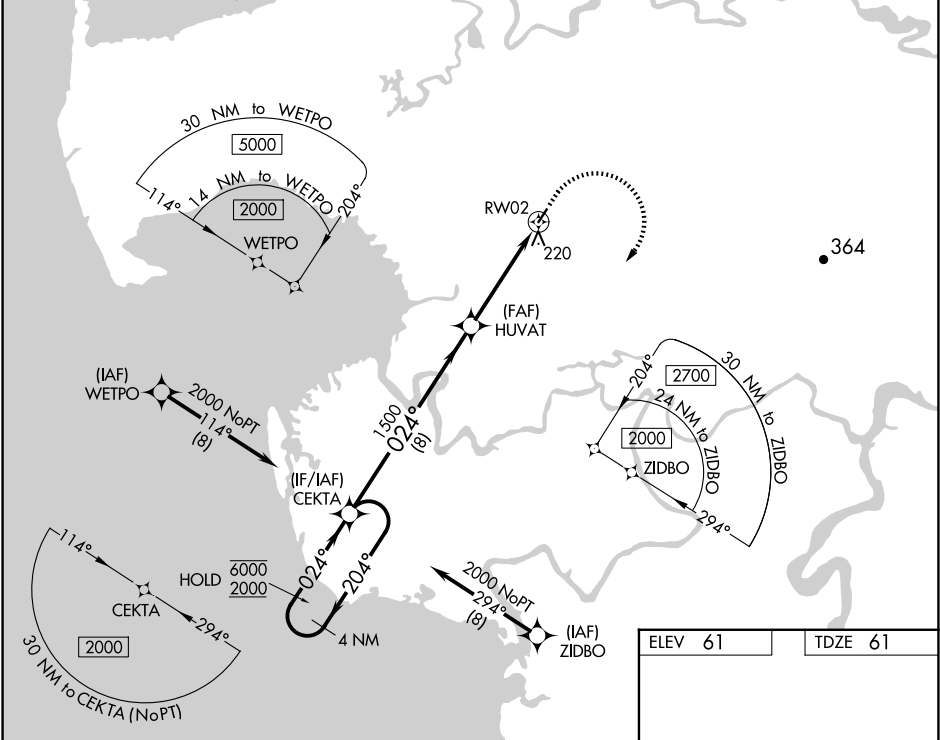
APP CRS	Rwy Ldg	3220
024°	TDZE	61
	Apt Elev	61

RNAV (GPS) RWY 2

CHEVAK (VAK)(PAVA)

RNP APCH.	MISSED APPROACH: Climb to 500, then climbing right turn to 2000 direct CEKTA and hold.
<div><div></div><div></div></div> For uncompensated Baro-VNAV systems, LNAV/VNAV NA below -22°C or above 54°C.	

AWOS-3P 120.625	ANCHORAGE CENTER 124.5	UNICOM 122.8 0	CTAF 123.0 0
--------------------	---------------------------	-------------------	-----------------



VGSI and RNAV glidepath not coincident (VGSI Angle 3.00/TCH 25).				
4 NM Holding Pattern CEKTA				
6000 ← 204° 2000 → 024°				
GP 3.00° TCH 40				
8 NM 3.1 NM 1.3 NM				
CATEGORY	A	B	C	D
LNAV/VNAV DA	381-1 320 (400-1)			
LNAV MDA	480-1	419 (500-1)	480-1½	419 (500-1½)
CIRCLING	520-1	459 (500-1)	520-1½ 459 (500-1½)	700-2 639 (700-2)

