

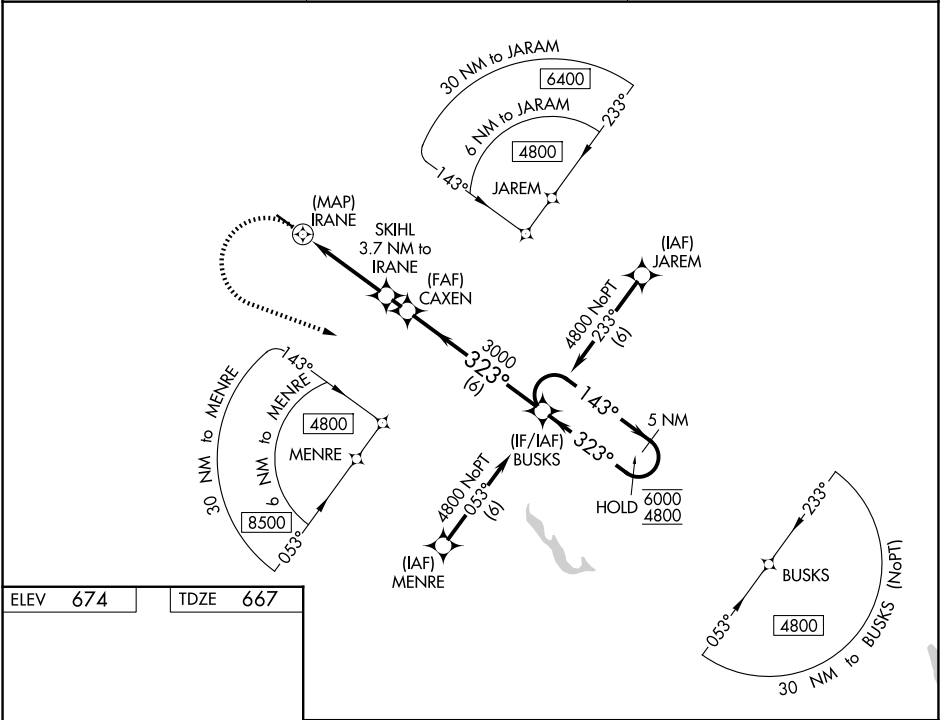
APP CRS	Rwy Ldg	3818
323°	TDZE	667
	Apt Elev	674

RNAV (GPS) Z RWY 32

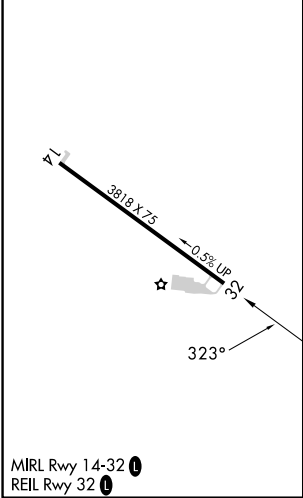
BETHEL RGNL (ØB1)

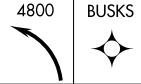
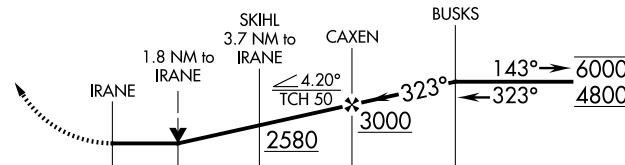
RNP APCH - GPS.	<div><div><div>▼</div><div>▲ NA</div><div>❄ -22°C</div></div><div>Rwy 32 helicopter visibility reduction below ¾ SM NA. Circling Rwy 14 NA at night. VDP NA when using AUG altimeter setting. When local altimeter setting not received, use AUG altimeter setting and increase all MDAs 160 feet. Caution any go-around after passing IRANE, may not provide standard obstacle clearance.</div></div>	MISSED APPROACH: Climbing left turn to 4800 direct BUSKS and hold, continue climb-in-hold to 4800.
-----------------	--	--

AWOS-AV 119.075	PORTLAND APP CON ★ 125.5 269.35	CTAF 122.9 0
--------------------	------------------------------------	-----------------



ELEV 674	TDZE 667
----------	----------



		5 NM Holding Pattern		
				
CATEGORY	A	B	C	D
LNAV MDA	1740-1½	1073 (1100-1½)	NA	
CIRCLING	1740-1½ 1066 (1100-1½)	2340-1½ 1666 (1700-1½)	NA	