

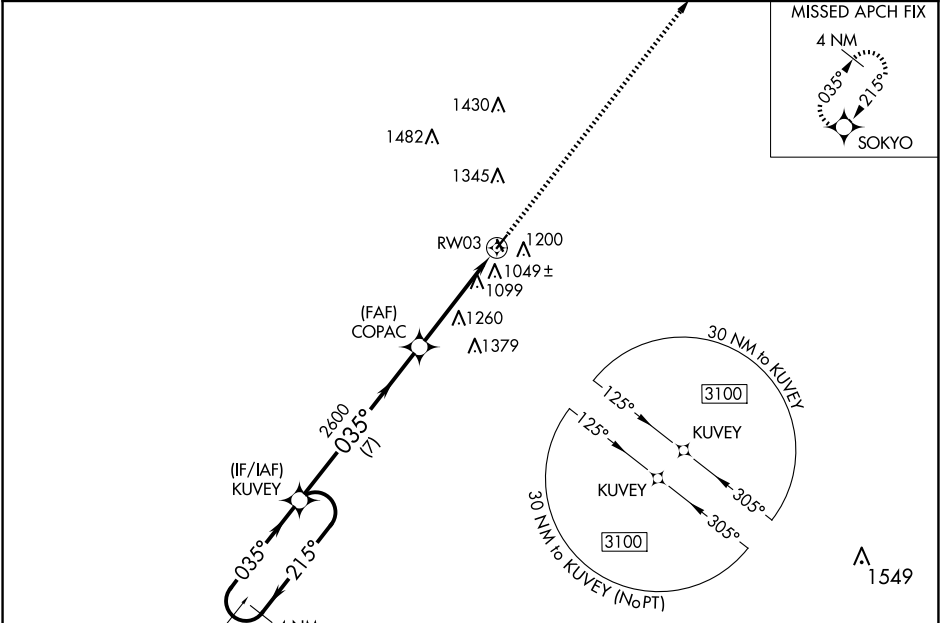
WAAS CH 49134 W03A	APP CRS 035°	Rwy Idg 3398 TDZE 941 Apt Elev 943
--	------------------------	---

RNAV (GPS) RWY 3

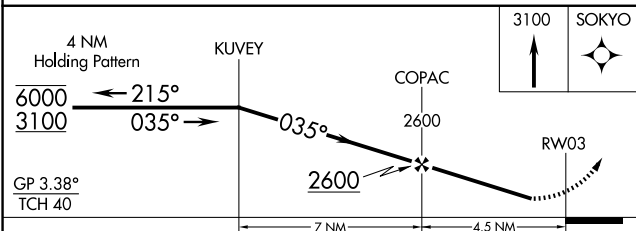
MIAMI COUNTY (K81)

RNP APCH - GPS.	MISSED APPROACH: Climb to 3100 direct SOKYO and hold.
<div><div>▼</div><div>▲ NA</div></div> Baro-VNAV NA. Use New Century Aircenter altimeter setting; when not received, use Johnson County Exec altimeter setting and increase all DA 8 feet and all MDA 20 feet. Rwy 3 helicopter visibility reduction below ¾ SM NA. Circling NA to Rwys 15 and 33.	

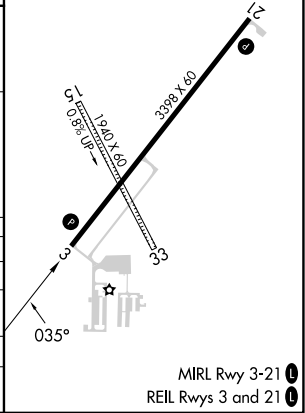
IXD ASOS 135.325	KANSAS CITY APP CON 118.9 251.075	UNICOM 122.8 (CTAF) 0
----------------------------	---	---------------------------------



ELEV 943	TDZE 941
----------	----------



CATEGORY	A	B	C	D
LPV DA	1284-1	343 (400-1)		NA
LNAV/VNAV DA	1274-1	333 (400-1)		NA
LNAV MDA	1640-1	699 (700-1)		NA
CIRCLING	1640-1	697 (700-1)		NA



NC-2, 07 AUG 2025 to 04 SEP 2025

NC-2, 07 AUG 2025 to 04 SEP 2025