

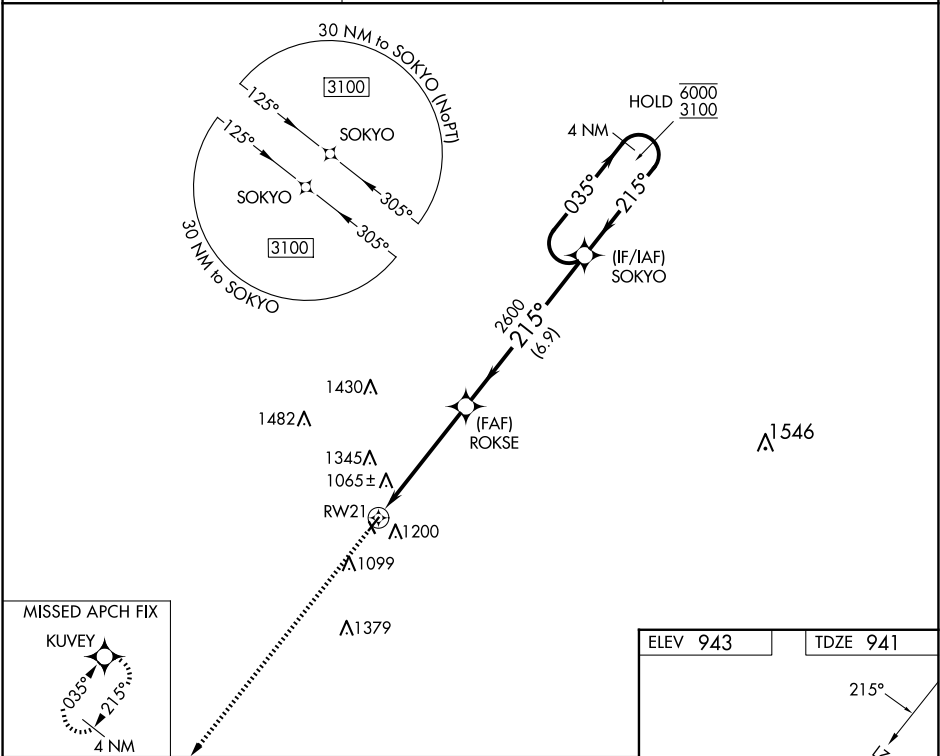
WAAS CH 63134 W21A	APP CRS 215°	Rwy Idg TDZE 941 Apt Elev 943	3398 941 943
--	------------------------	---	---

RNAV (GPS) RWY 21

MIAMI COUNTY (K81)

RNP APCH - GPS.	Baro-VNAV NA. Use New Century Aircenter altimeter setting; when not received, use Johnson County Exec altimeter setting and increase all DA 8 feet and all MDA 20 feet; increase LPV and LNAV/VNAV all Cots visibility 1/8 mile. Rwy 21 helicopter visibility reduction below 3/4 SM NA. Circling NA to Rwys 15 and 33.	MISSED APPROACH: Climb to 3100 direct KUYEY and hold.
-----------------	---	---

IXD ASOS 135.325	KANSAS CITY APP CON 118.9 251.075	UNICOM 122.8 (CTAF) 0
----------------------------	---	---------------------------------



3100

↑

KUYEY

✧

RW21

ROKSE

✕

2600

SOKYO

4 NM

Holding Pattern

035° →

← 215°

6000

3100

215°

2600

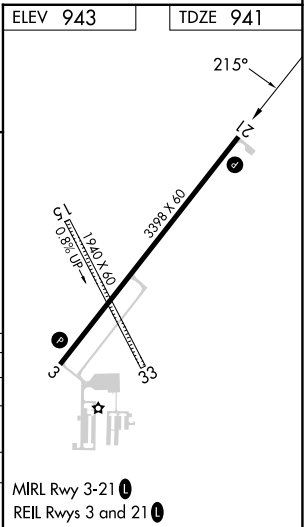
5.1 NM

6.9 NM

GP 3.00°

TCH 40

CATEGORY	A	B	C	D
LPV DA	1252-1	311 (400-1)	NA	
LNAV/VNAV DA	1429-1 5/8	488 (500-1 5/8)	NA	
LNAV MDA	1520-1	579 (600-1)	NA	
C CIRCLING	1580-1	637 (700-1)	NA	



NC-2, 07 AUG 2025 to 04 SEP 2025

NC-2, 07 AUG 2025 to 04 SEP 2025