

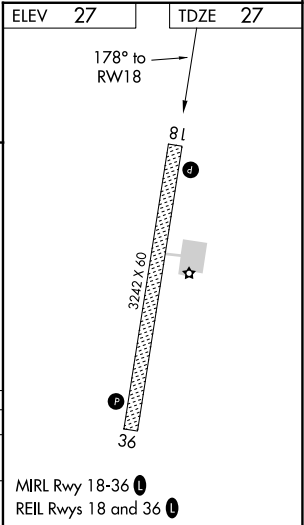
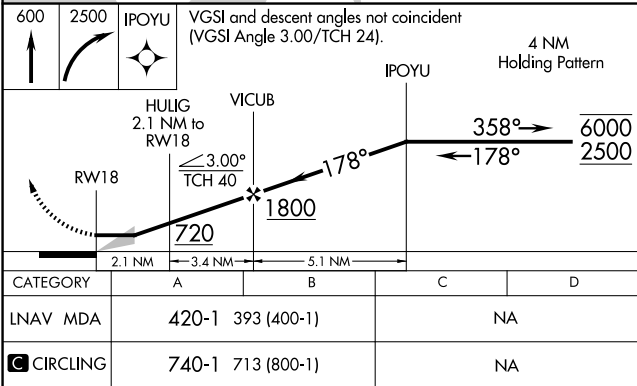
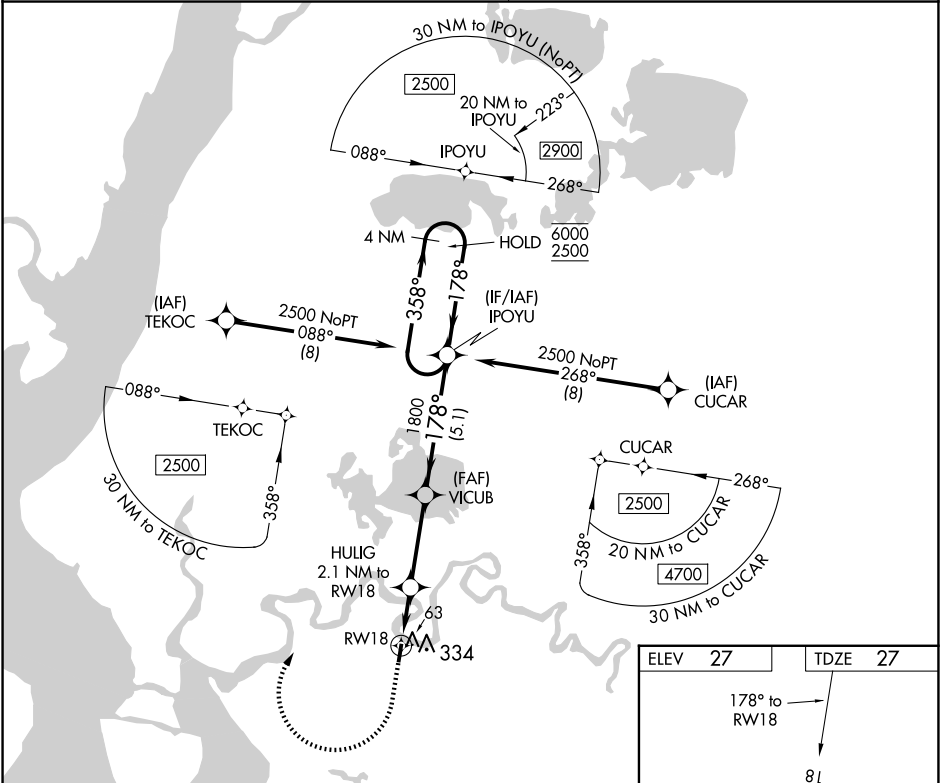
APP CRS	Rwy Idg	3242
178°	TDZE	27
	Apt Elev	27

RNAV (GPS) RWY 18  
EEK (EEK) (PAEE)

RNP APCH.
▼ ▲ NA
Use Bethel altimeter setting, when not received procedure NA.

MISSED APPROACH: Climb to 600 then climbing right turn to 2500 direct IPOYU and hold.

ANCHORAGE CENTER 125.2 372.0	CTAF 122.8
---------------------------------	---------------



AK, 07 AUG 2025 to 02 OCT 2025

AK, 07 AUG 2025 to 02 OCT 2025