

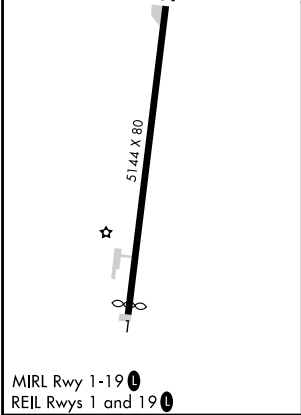
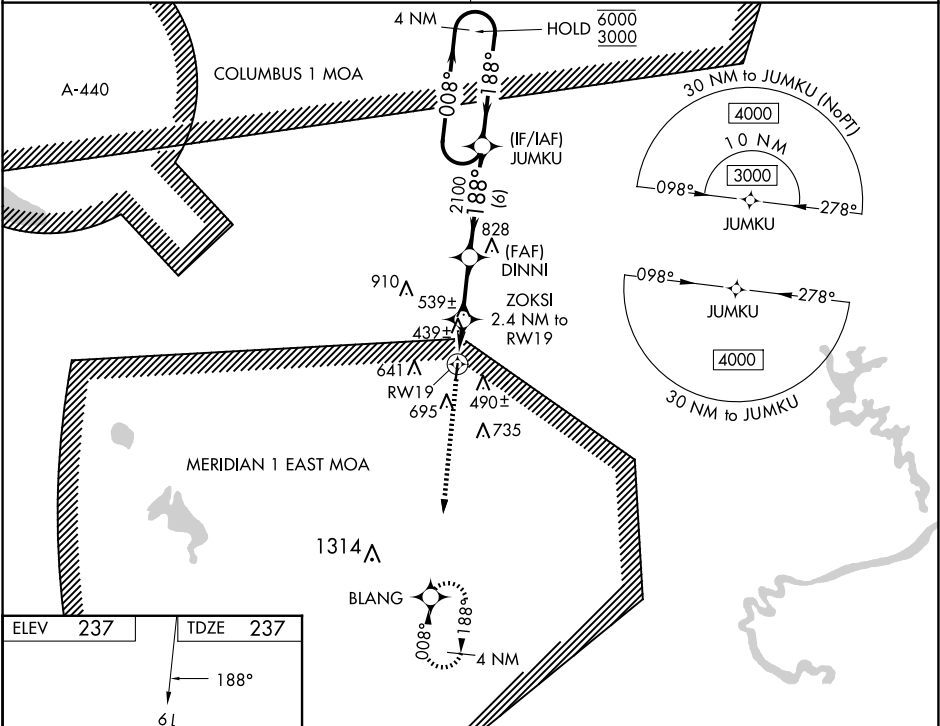
WAAS CH 72729 W19A	APP CRS 188°	Rwy Idg TDZE Apt Elev	5144 237 237
--	------------------------	-----------------------------	---



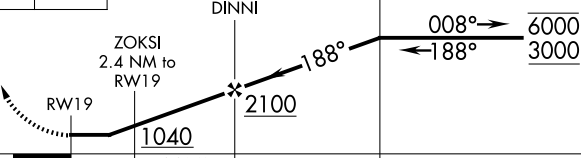
RNAV (GPS) RWY 19

NORTH PICKENS (3M8)

RNP APCH.	<p>Procedure NA at night. Rwy 19 helicopter visibility reduction below 1 SM NA. Obtain local altimeter setting on CTAF; when not received, use Tuscaloosa altimeter setting: increase all MDAs 80 feet; increase LP and LNAV Cat C/D visibility ¼ SM; increase Circling visibility all Cats ½ SM.</p>	MISSED APPROACH: Climb to 3000 direct BLANG and hold.
-----------	---	---

COLUMBUS APP CON ★ 135.6 323.275	CTAF 122.9
--	----------------------



3000	BLANG	Visual Segment - Obstacles.		4 NM Holding Pattern	
					
CATEGORY		A	B	C	D
LP MDA		700-1	463 (500-1)	700-1½	463 (500-1½)
LNAV MDA		800-1	563 (600-1)	800-1½	563 (600-1½)
CIRCLING		1000-1	763 (800-1)	1000-2¼ 763 (800-2¼)	1040-2½ 803 (900-2½)