

APP CRS  
**198°**

Rwy Idg  
TDZE  
Apt Elev

**5000**  
**717**  
**718**

RNAV (GPS) RWY 20

BILL PUGH FLD (M22)

RNP APCH-GPS.

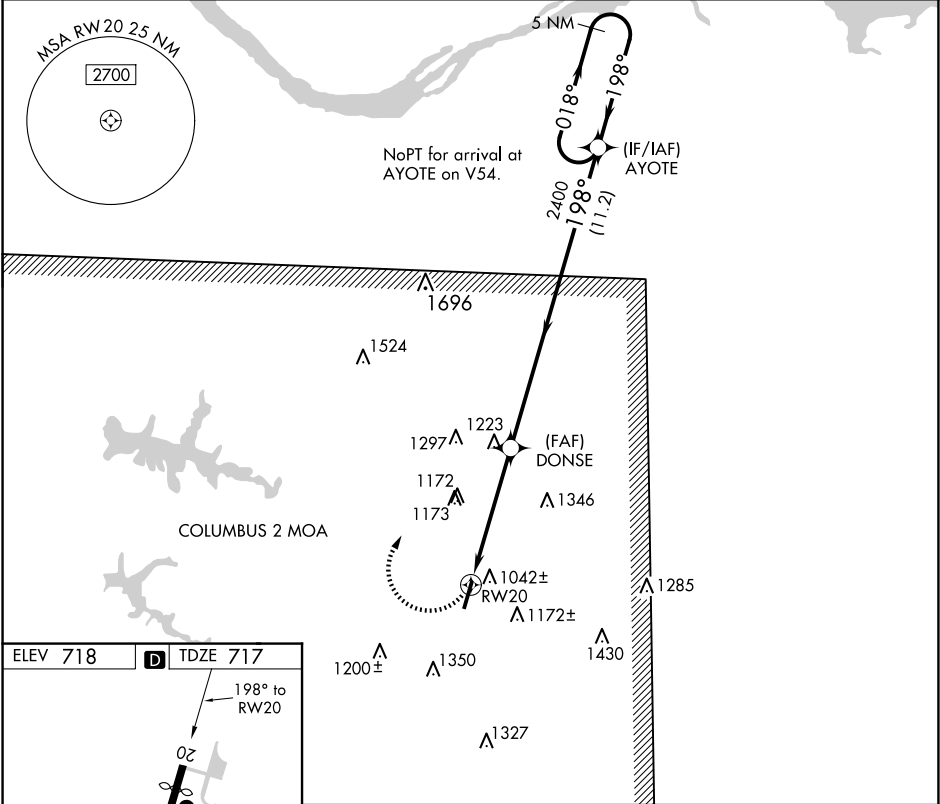
▼

▲ NA

Use Muscle Shoals altimeter setting; when not received, use Decatur altimeter setting and increase all MDA 60 feet; increase LNAV Cat C/D visibility 1/8 SM and Circling Cat A visibility 1/4 SM. Procedure NA at night. Rwy 20 helicopter visibility reduction below 1 SM NA.

MISSED APPROACH:  
Climbing right turn to 3000  
direct AYOTE and hold.

MSL ASOS <b>119.425</b>	MEMPHIS CENTER <b>120.8 307.0</b>	UNICOM <b>122.8 (CTAF) 0</b>
----------------------------	--------------------------------------	---------------------------------



ELEV 718

D

TDZE 717

198° to RW20

20

5500 x 75

0.3% UP

2

3000

AYOTE

5 NM Holding Pattern

AYOTE

DONSE

RW20

3.04°

TCH 40

2400

198°

018°

3000

5.1 NM

11.2 NM

CATEGORY	A	B	C	D
LNAV MDA	1360-1	643 (700-1)	1360-1 <sup>7</sup> / <sub>8</sub>	643 (700-1 <sup>7</sup> / <sub>8</sub> )
CIRCLING	1520-1 802 (900-1)	1540-1 <sup>1</sup> / <sub>4</sub> 822 (900-1 <sup>1</sup> / <sub>4</sub> )	1720-3	1002 (1100-3)