

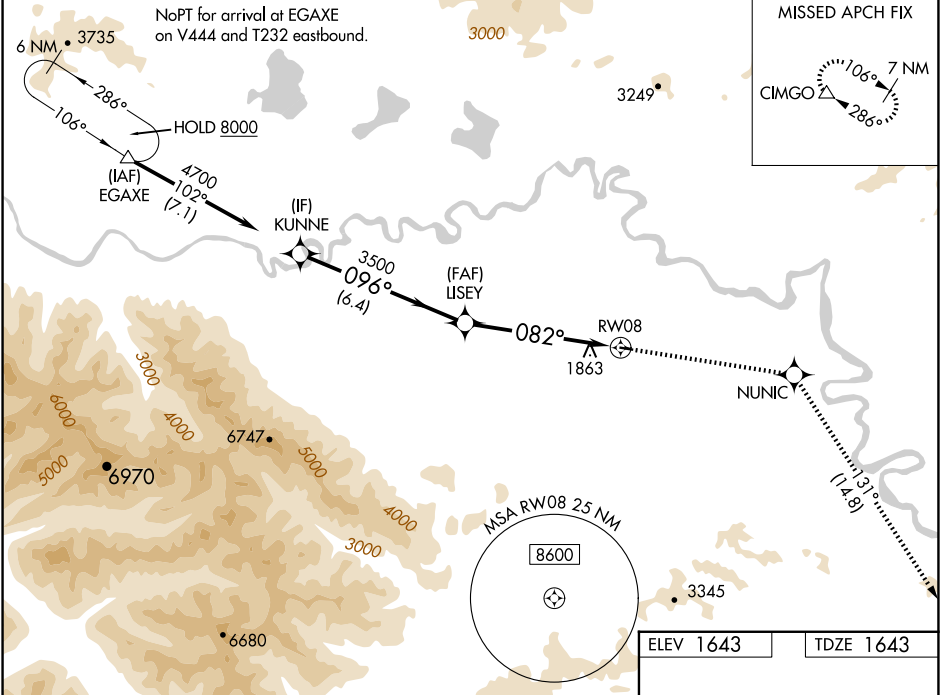
WAAS CH 77546 W08A	APP CRS 082°	Rwy Idg TDZE 1643 Apt Elev 1643
--	------------------------	---

RNAV (GPS) RWY 8

TOK JUNCTION (6K8) (PFTO)

RNP APCH - GPS.	MISSED APPROACH: Climb to 8000 direct NUNIC and on track 131° to CIMGO and hold, continue climb-in-hold to 8000.
<div><div></div><div>Rwy 8 helicopter visibility reduction below ¾ SM NA. For uncompensated Baro-VNAV systems, LNAV/VNAV NA below -25°C or above 54°C.</div></div>	

AWOS-3P 118.1	ANCHORAGE CENTER 126.55 323.0	NORTHWAY RADIO 122.4	UNICOM 122.8 (CTAF) 0
-------------------------	---	--------------------------------	--



KUNNE		8000	NUNIC	tr 131°	CIMGO
4700		3500			
GP 3.04°		3500	1.4 NM to RW08	RW08	
TCH 40					
6.4 NM		4.3 NM	1.4		
CATEGORY	A	B	C	D	
LPV DA	1895-1 252 (300-1)			NA	
LNAV/VNAV DA	2120-1⅜ 477 (500-1⅜)			NA	
LNAV MDA	2120-1	477 (500-1)	2120-1⅜ 477 (500-1⅜)	NA	
CIRCLING	2180-1	537 (600-1)	2180-1½ 537 (600-1½)	NA	

ELEV 1643	TDZE 1643
<div>2509 X 50 082° 2°</div>	
MIRL Rwy 8-26 0	