

# RNAV (GPS) RWY 3

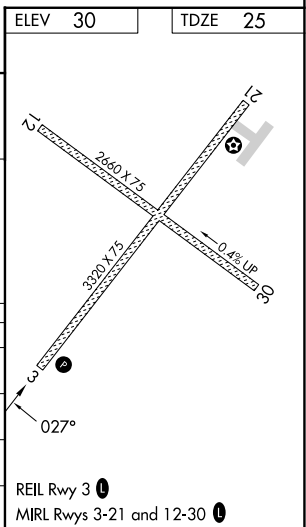
## DEERING (DEE)(PADE)


**MISSED APPROACH:** Climb to 3700 direct FEGEK and hold, continue climb-in-hold to 3700.

CTAF  
**122.9 L**



AK, 07 AUG 2025 to 02 OCT 2025



CATEGORY		A	B	C	D
LPV	DA	275-1 250 (300-1)			NA
INAV/ VNAV	DA	275-1 250 (300-1)			NA
INAV	MDA	420-1 395 (400-1)		420-1 $\frac{1}{8}$ 395 (400-1 $\frac{1}{8}$ )	NA
 CIRCLING		680-1 650 (700-1)	840-1 810 (900-1)	840-2 $\frac{1}{4}$ 810 (900-2 $\frac{1}{4}$ )	NA