

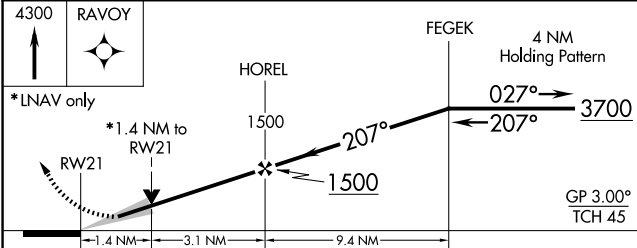
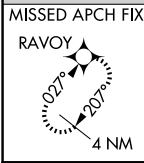
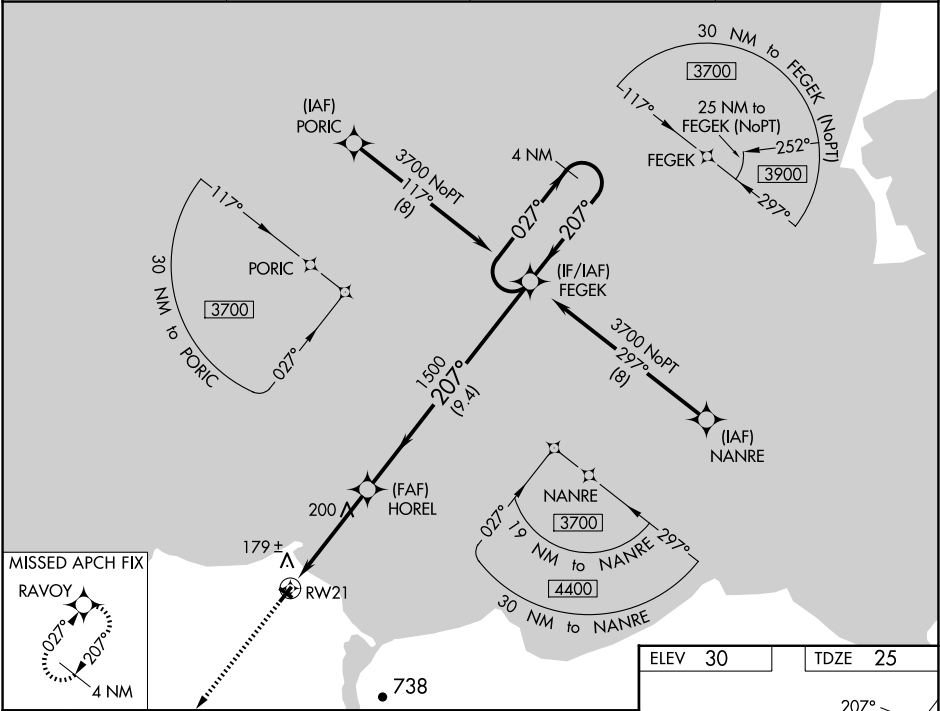
WAAS CH 56241 W21A	APP CRS 207°	Rwy Idg 3320 TDZE 25 Apt Elev 30
--	------------------------	---

RNAV (GPS) RWY 21

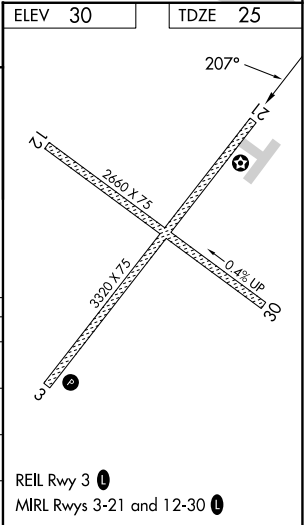
DEERING (DEE)(PADE)

<div><div><div><div></div><div></div><div></div></div><div><div></div><div></div><div></div></div></div><div><div><div></div><div></div><div></div></div><div><div></div><div></div><div></div></div></div><div><div><div></div><div></div><div></div></div><div><div></div><div></div><div></div></div></div></div> <div>Circling to Rwy 12, 30 NA at night. For uncompensated Baro-VNAV systems, LNAV/VNAV NA below -19°C (-2°F) or above 54°C (130°F). DME/DME RNP-0.3 NA.</div> <div>MISSED APPROACH: Climb to 4300 direct RAVOY and hold, continue climb-in-hold to 4300.</div>
--

ASOS 135.5	ANCHORAGE CENTER 119.2 263.0	KOTZEBUE RADIO 122.25	CTAF 122.9
----------------------	--	---------------------------------	----------------------



CATEGORY	A	B	C	D
LPV DA	275-1	250 (300-1)		NA
LNAV/VNAV DA	332-1	307 (400-1)		NA
LNAV MDA	500-1	475 (500-1)	500-1 3/8 475 (500-1 3/8)	NA
CIRCLING	680-1 650 (700-1)	840-1 810 (900-1)	840-2 1/4 810 (900-2 1/4)	NA



AK, 07 AUG 2025 to 02 OCT 2025

AK, 07 AUG 2025 to 02 OCT 2025