

APP CRS
083°

Rwy Idg
3299

TDZE
964

Apt Elev
967

RNAV (GPS) RWY 8
BOYCEVILLE MUNI (3T3)

RNP APCH.

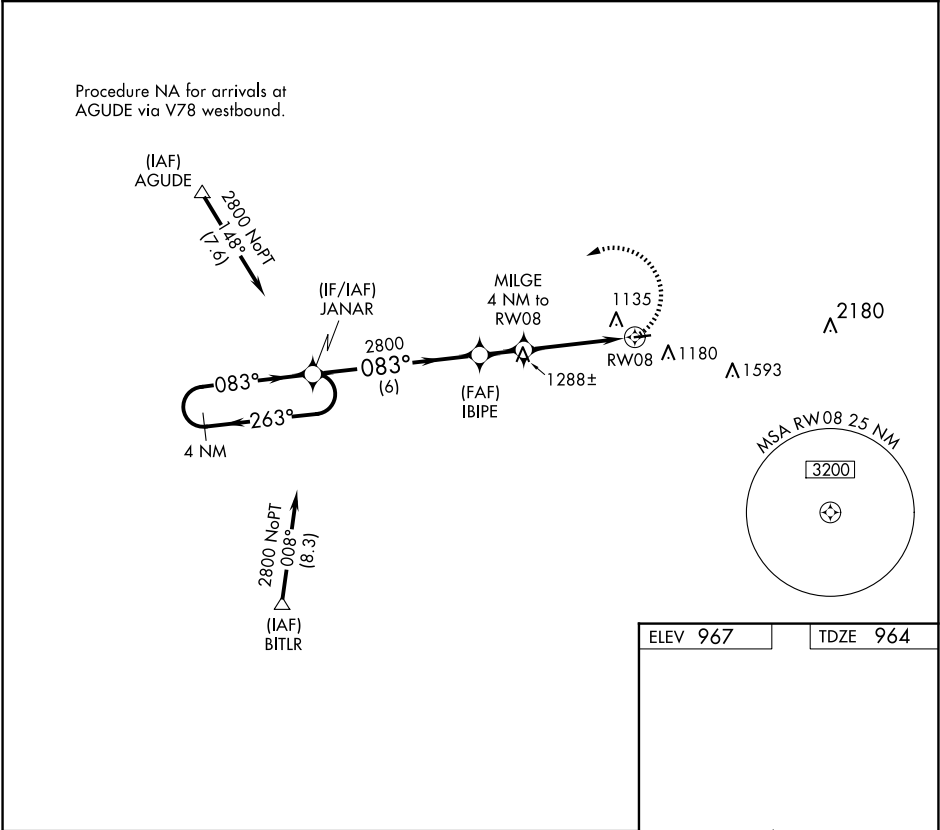
▼

NA

Use New Richmond Rgnl altimeter setting.
When VGSI inop, procedure NA at night.
Helicopter visibility reduction below 1 SM NA.

MISSED APPROACH: Climbing left turn to 2800 direct JANAR and hold.

| | | |
|---------------------|-----------------------------------|--------------------------|
| RNH AWOS-3 120.0 | MINNEAPOLIS CENTER 125.3 335.6 | UNICOM 122.8 (CTAF) 0 |
|---------------------|-----------------------------------|--------------------------|



4 NM Holding Pattern

JANAR

IBIPE

MILGE 4 NM to RW08

2800 JANAR

2800

2280

RW08

083°

263°

083°

083°

0.5% UP

3299 X 60

26

| | | | | |
|----------|--------|-------------|-------------------------|----|
| CATEGORY | A | B | C | D |
| LNAV MDA | 1580-1 | 616 (700-1) | 1580-1¼ 616 (700-1¼) | NA |

MIRL Rwy 8-26 0
REIL Rwy 26 0

EC-3, 07 AUG 2025 to 04 SEP 2025

EC-3, 07 AUG 2025 to 04 SEP 2025