


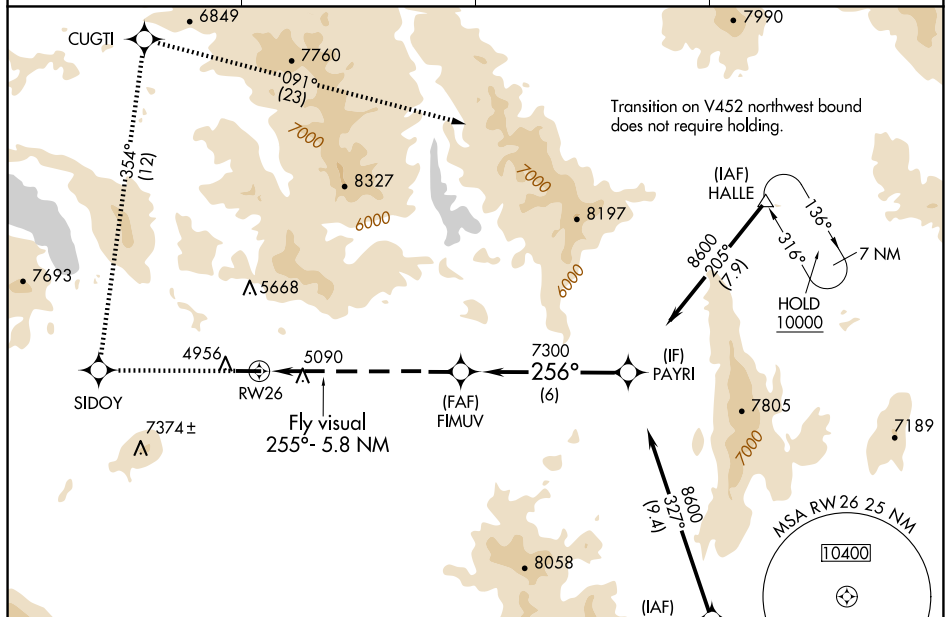


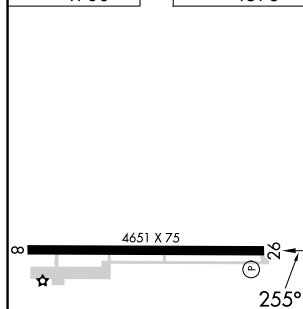
WAAS CH 49203 W26A	APP CRS 256°	Rwy Idg 4651 TDZE 4896 Apt Elev 4900
--	------------------------	---

RNAV (GPS) Z RWY 26
NERVINO (002)

 Use Reno/Stead altimeter setting; when not received, use Reno/Tahoe Intl altimeter setting and increase DA 180 feet.  DME/DME RNP -0.3 NA.  -13°C Helicopter visibility reduction below ¾ SM not authorized.	MISSED APPROACH: Climb to 10000 direct SIDOY and right turn on track 354° to CUGTI and right turn on track 091° to HALLE and hold.		
AWOS-2 119.35	RTS AWOS-3 135.175	NORCAL APP CON 126.3 353.9	UNICOM 122.8 (CTAF) 0



ELEV 4900		TDZE 4896
-----------	--	-----------



10000 ↑	SID0Y ✦	CUGTI tr 354° ✦	HALLE tr 091° ✦	VGS1 and RNAV glidepath not coincident (VGS1 Angle 3.50/TCH 50).	
<p>Fly visual 255°- 5.8 NM</p> <p>RW26</p> <p>FIMUV 7300</p> <p>PAYRI 8600</p> <p>256°</p> <p>7300</p> <p>GP 3.00° TCH 55</p> <p>7.2 NM</p> <p>6 NM</p>					
CATEGORY		A	B	C	D
LPV	DA	6787-2	1891 (1900-2)	6787-3	1891 (1900-3)

RNAV (GPS) Z RWY 26