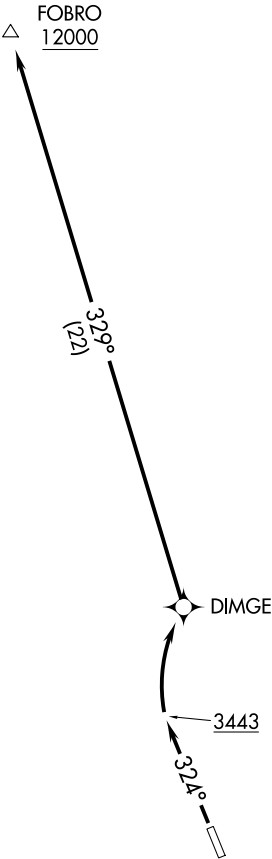


SEATTLE CENTER
124.85 306.3
UNICOM
122.7



NOTE: RNAV 1.
NOTE: GPS required.

TAKEOFF MINIMUMS
Rwy 14: NA-obstacles.
Rwy 32: Standard with minimum climb of
325' per NM to 12000.

NOTE: Chart not to scale.

DEPARTURE ROUTE DESCRIPTION

TAKEOFF RUNWAY 32: Climb heading 324° to 3443, then right turn direct DIMGE, then on track 329° to cross FOBRO at or above 12000 or as assigned by ATC.

SW-2, 07 AUG 2025 to 04 SEP 2025

SW-2, 07 AUG 2025 to 04 SEP 2025