

WAAS CH 93540 W17A	APP CRS 191°	Rwy Idg TDZE 136 Apt Elev 138
--	------------------------	---

RNAV (GPS) RWY 17

GRAYLING (KGX)(PAGX)

RADAR required for procedure entry.

▼

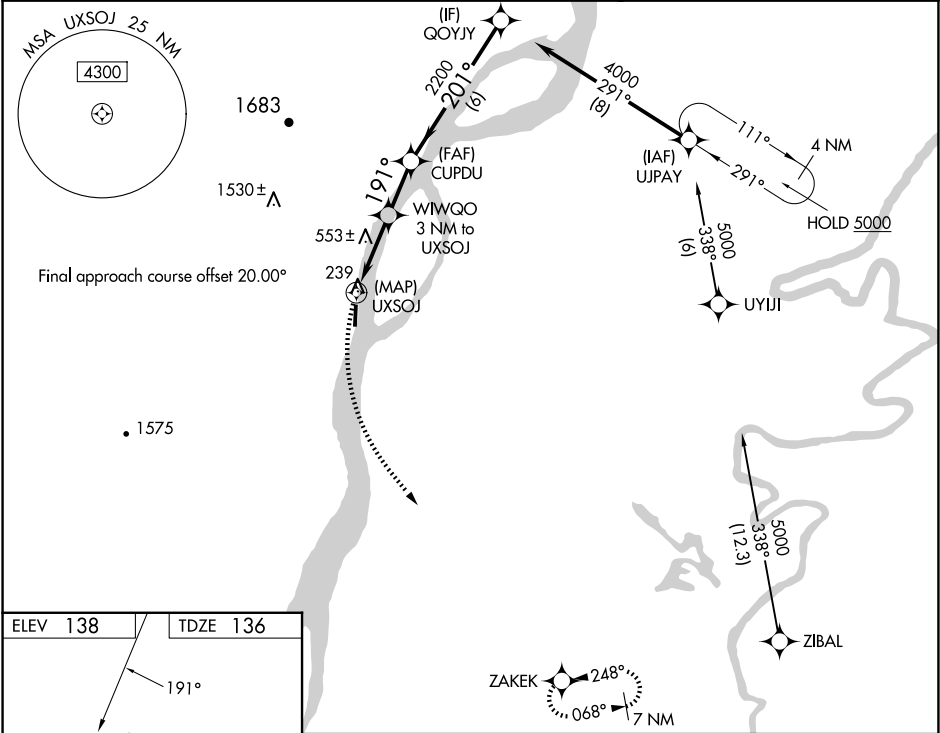
▲ NA

❄ -23°C

Circling NA west of Rwy 17-35. Rwy 17 helicopter visibility reduction below ¾ SM NA. DME/DME RNP-0.3 NA. Use Shageluk altimeter setting; when not received, use Anvik altimeter setting.

MISSED APPROACH: Climbing left turn to 7000 direct ZAKEK and hold, continue climb-in-hold to 7000.

SHX/PAHX AWOS-3P 121.575	ANCHORAGE CENTER 118.15 251.05	KENAI RADIO 122.4	CTAF 122.9 0
------------------------------------	--	-----------------------------	------------------------



ELEV 138

TDZE 136

191°

1

1.1% UP

4000 X 75'

35

MIRL Rwy 17-35 0

7000	ZAKEK	UXSOJ	WUWGO 3 NM to UXSOJ	CUPDU	GOYJY
			≤3.50° TCH 40	201°	4000
		1420	2200		
0.5	3 NM	2.1 NM	6 NM		
CATEGORY	A	B	C	D	
LP	MDA	860-1	724 (800-1)	1360-2 ½	1224 (1300-2 ½)
LNAV	MDA	1360-1 ¼	1224 (1300-1 ¼)	1360-1 ½	1224 (1300-1 ½)
CIRCLING		1360-1 ¼	1222 (1300-1 ¼)	1360-1 ½	1222 (1300-1 ½)
		1360-1 ¼	1222 (1300-1 ¼)	1360-3	1420-3
		1222 (1300-3)	1282 (1300-3)		

AK, 07 AUG 2025 to 02 OCT 2025

AK, 07 AUG 2025 to 02 OCT 2025