



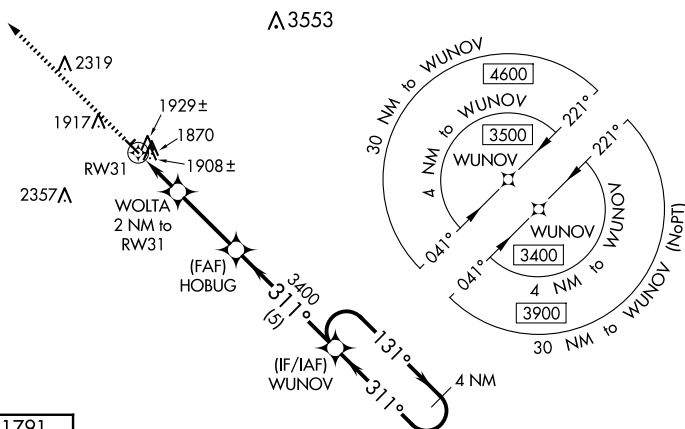
WAAS CH 63240 W31A	APP CRS 311°	Rwy Idg 3697 TDZE 1791 Apt Elev 1793
--	------------------------	---

RNAV (GPS) RWY 31

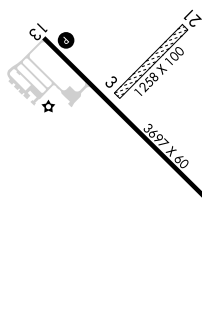
CLARK COUNTY (8D7)

  NA	Rwy 31 helicopter visibility reduction below $\frac{3}{4}$ SM NA. DME/DME RNP-0.3 NA. Use Watertown altimeter setting. Circling Rwy 3, 21 NA.	MISSED APPROACH: Climb to 3400 direct WOPOB and hold.
---	---	--

<p>ATY ASOS</p> <p>126.625</p>	<p>MINNEAPOLIS CENTER</p> <p>128.5 306.2</p>	<p>UNICOM</p> <p>122.8 (CTAF) 0</p>
---------------------------------------	---	---



ELEV 1793		TDZE 1791
-----------	--	-----------

MIRL Rwy 13-31 **L**