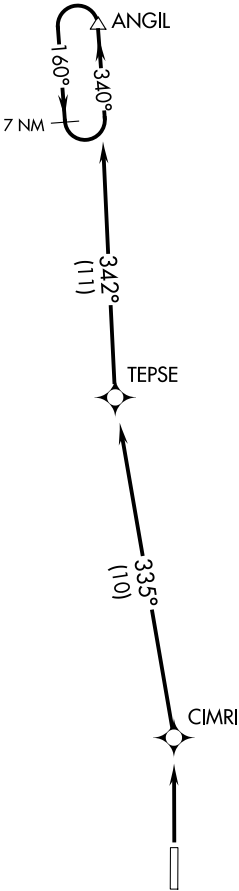


SALT LAKE CITY CENTER  
127.075 244.875  
CTAF  
122.8

TOP ALTITUDE:  
10000



NOTE: RNAV 1.  
NOTE: GPS required.

TAKEOFF MINIMUMS  
Rwy 16: NA, see HANIM DEPARTURE  
Rwy 34: Standard

NOTE: Chart not to scale.



DEPARTURE ROUTE DESCRIPTION

TAKEOFF RUNWAY 34: Climb to 10000 direct CIMRI and on track 335° to TEPSE and on track 342° to ANGIL, continue climb in ANGIL holding pattern to cross ANGIL at or above MEA for route of flight before proceeding on course.