

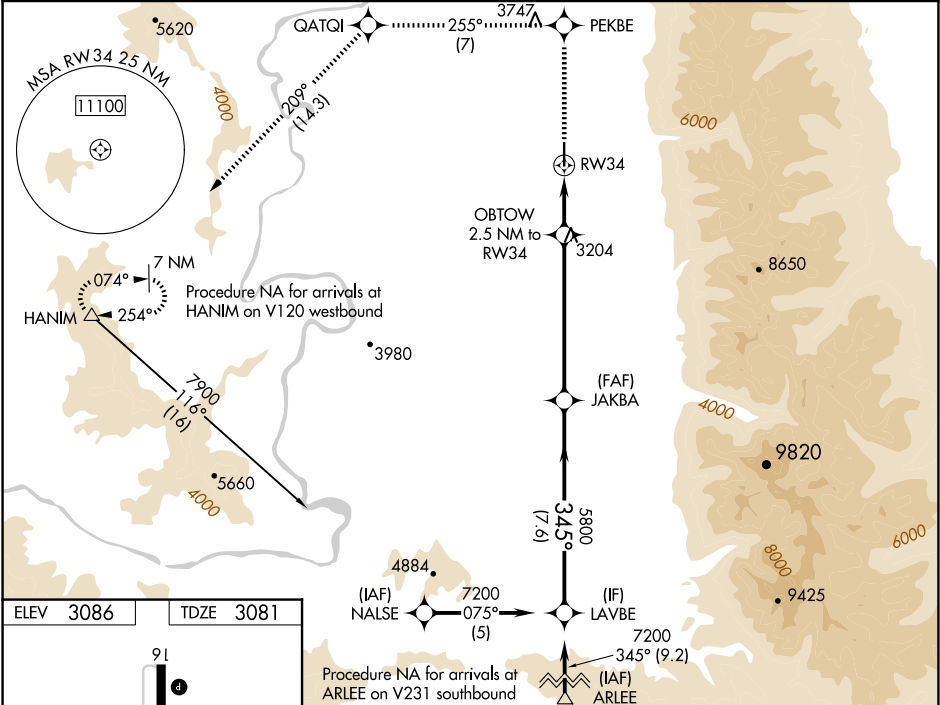
WAAS CH 86614 W34A	APP CRS 345°	Rwy Idg TDZE Apt Elev	4798 3081 3086
--	------------------------	-----------------------------	---

RNAV (GPS) RWY 34

RONAN (7SØ)

RNP APCH.	MISSED APPROACH: Climb to 13000 direct PEKBE and on track 255° to QATQI and on track 209° to HANIM and hold, continue climb-in-hold to 13000.
NA	Baro-VNAV NA when using Missoula altimeter setting. For uncompensated Baro-VNAV systems, procedure NA below -21°C or above 54°C. Circling NA east of Rwy 16-34. When local altimeter setting not received, use Missoula altimeter setting and increase LPV DA to 3545 and all visibilities ¾ SM, LNAV/VNAV DA to 3545 and all visibilities ¾ SM; and increase all MDAs 120 feet.

AWOS-3 119.925	SALT LAKE CITY CENTER 127.075 244.875	AUNICOM 122.8 (CTAF)
--------------------------	---	--------------------------------



ELEV 3086	TDZE 3081
*LNAV only	
OBTOW 2.5 NM to RW34	
RW34	
3900*	
5800	
7200	
GP 3.00° TCH 40	
CATEGORY	
A	
B	
C	
D	
LPV DA	
3438-1 357 (400-1)	
NA	
LNAV/VNAV DA	
3438-1¼ 357 (400-1¼)	
NA	
LNAV MDA	
3520-1 439 (500-1)	
NA	
CIRCLING	
3560-1 474 (500-1)	
NA	