

WAAS CH 45814 W16A	APP CRS 165°	Rwy Idg 4798 TDZE 3086 Apt Elev 3086
--	------------------------	---

RNAV (GPS) RWY 16
RONAN (7S0)

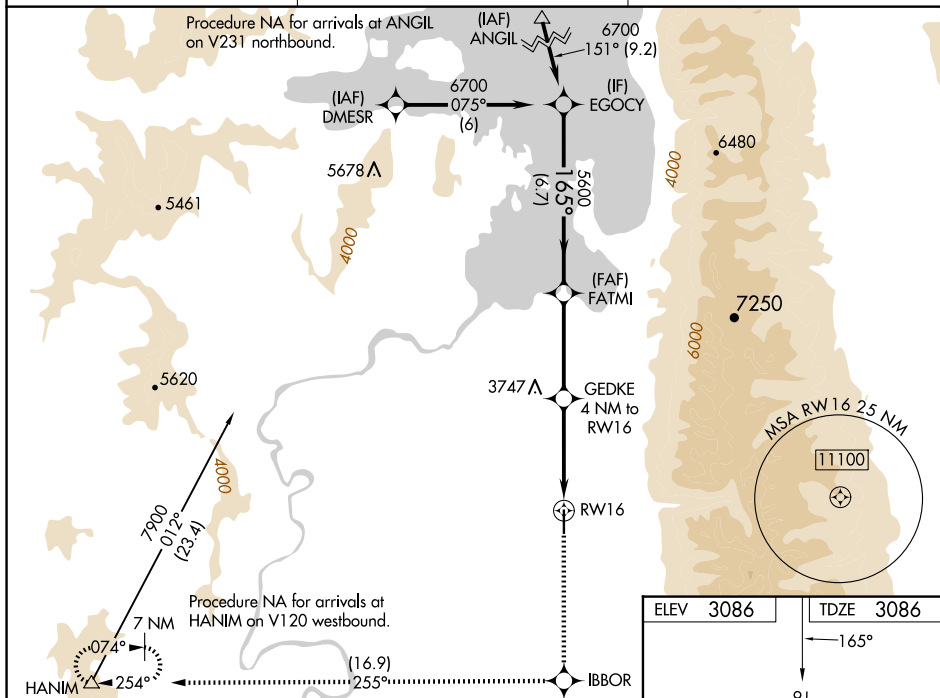
RONAN (7S0)

RNP APCH.

Baro-VNAV NA when using Missoula altimeter setting. For uncompensated Baro-VNAV systems, procedure NA below -21°C or above 54°C. Circling NA east of Rwy 16-34. When local altimeter setting not received, use Missoula altimeter setting: increase LPV DA to 3550 and LNAV/VNAV DA to 3639 and all visibilities $\frac{1}{4}$ SM; increase all MDAs 120 feet and LNAV Cat B and Circling Cats A and B visibility $\frac{1}{4}$ SM.

MISSED APPROACH:
Climb to 13000 direct
IBBOR and on track 255°
to HANIM and hold,
continue climb-in-hold to
13000.

AWOS-3 119.925	SALT LAKE CITY CENTER 127.075 244.875	AUNICOM 122.8 (CTAF) 0
--------------------------	---	----------------------------------



VGSI and RNAV glidepath not coincident (VGSI Angle 3.00/TCH 21).

EGOCY 6700 165° 5600 FATMI

GP 3.00° TCH 40

13000 IBBOR tr 255° HANIM

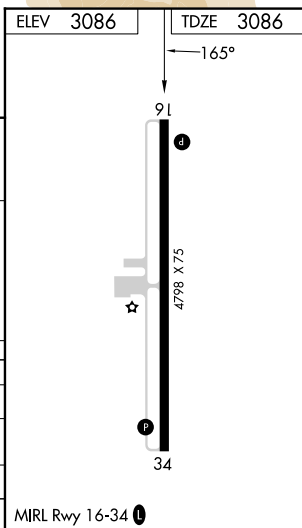
GEDKE 4 NM to RW16

*LNAV only

*4400

6.7 NM 3.8 NM 4 NM

CATEGORY	A	B	C	D
LPV DA	3443-1¼	357 (400-1¼)		NA
LNAV/VNAV DA	3532-1⅜	446 (500-1⅜)		NA
LNAV MDA	3800-1	714 (800-1)		NA
C CIRCLING	3800-1	714 (800-1)		NA



RNAV (GPS) RWY 16