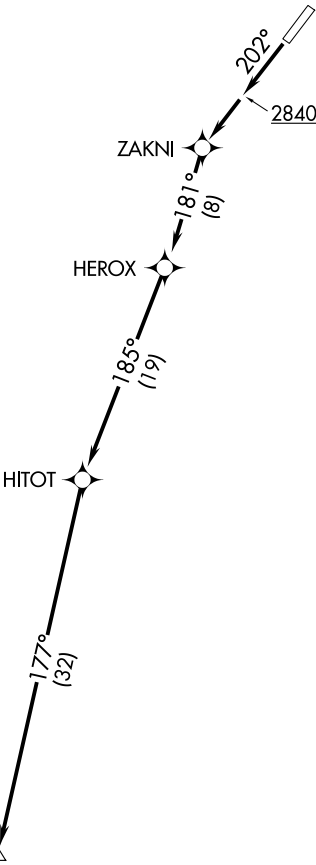


SEATTLE CENTER  
123.95 290.55  
CTAF  
123.0



NOTE: RNAV 1.  
NOTE: GPS required.

TAKEOFF MINIMUMS

Rwy 2: NA- Terrain.  
Rwy 20: Standard with minimum climb of 245' per NM to 5500.

TAKEOFF OBSTACLE NOTES

Rwy 20: Trees and pole beginning 741' from DER, 684' left of centerline, up to 111' AGL/2417' MSL.  
Terrain 138' from DER, 357' right of centerline, 2324' MSL.  
Building 583' from DER, 523' right of centerline, 52' AGL/2362' MSL.  
Crane 855' from DER, 586' right of centerline, 61' AGL/2368' MSL.  
Crane 861' from DER, 713' right of centerline, 72' AGL/2377' MSL.  
Tree 931' from DER, 460' right of centerline, 92' AGL/2397' MSL.  
Tree 2024' from DER, 2' right of centerline, 107' AGL/2399' MSL.  
Tree 2175' from DER, 182' right of centerline, 113' AGL/2403' MSL.

NOTE: Chart not to scale.

DEPARTURE ROUTE DESCRIPTION

TAKEOFF RUNWAY 20: Climb heading 202° to 2840, then direct ZAKNI, then on depicted route to KARPS, cross KARPS at or above MEA for assigned route of flight.