

WAAS CH <b>99544</b> <b>W29A</b>	APP CRS <b>296°</b>	Rwy Idg <b>4479</b> TDZE <b>374</b> Apt Elev <b>374</b>
--	------------------------	---

RNAV (GPS) RWY 29  
MESA DEL REY (KIC)

RNP APCH - GPS.	
-----------------	--

**T** Use MRY altimeter setting; when not received, use  
**A** NA SNS altimeter setting and increase all MDAs 20 feet.

**MISSED APPROACH:** (Do not exceed 170K until KILTS)  
Climb to 1100 then climbing right turn to 3900 direct  
KILTS and hold.

MRY ASOS <b>119.25</b>	OAKLAND CENTER <b>128.7 307.0</b>	CTAF <b>122.9</b>
---------------------------	--------------------------------------	----------------------

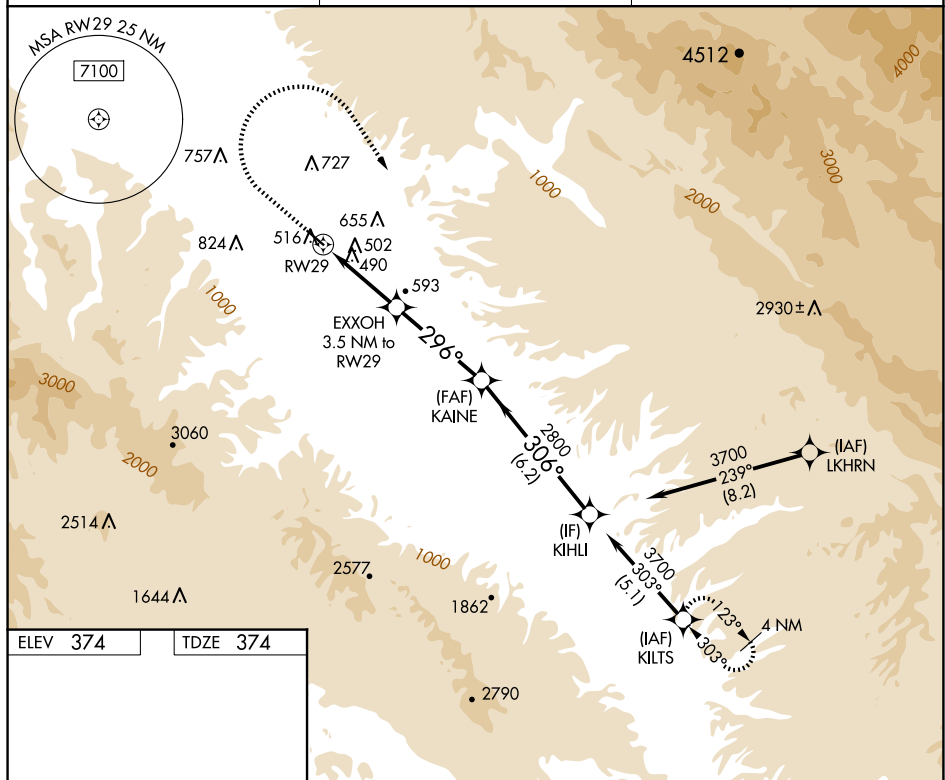


Diagram illustrating the RW29 instrument approach. The approach path is shown with a 296° turn, a 1 NM distance to RW29, and a 2.5 NM distance. The approach continues with a 296° turn, a 4 NM distance, and a 3.00° TCH 40. The final segment is a 306° turn, a 6.2 NM distance, and a 3700 heading. The diagram also shows the KILTS (Kilts) and KAHN (Kahn) airports.

CATEGORY	A	B	C	D
LP MDA	840-1	466 (500-1)	840-1 $\frac{3}{8}$ 466 (500-1 $\frac{3}{8}$ )	NA
LNAV MDA	880-1	506 (600-1)	880-1 $\frac{3}{8}$ 506 (600-1 $\frac{3}{8}$ )	NA