

WAAS CH 56540 W28A	APP CRS 283°	Rwy Ldg 6000 TDZE 4230 Apt Elev 4230
--	------------------------	---

RNAV (GPS) RWY 28

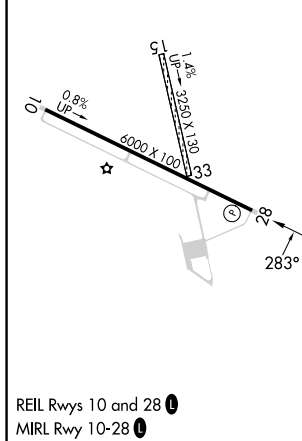
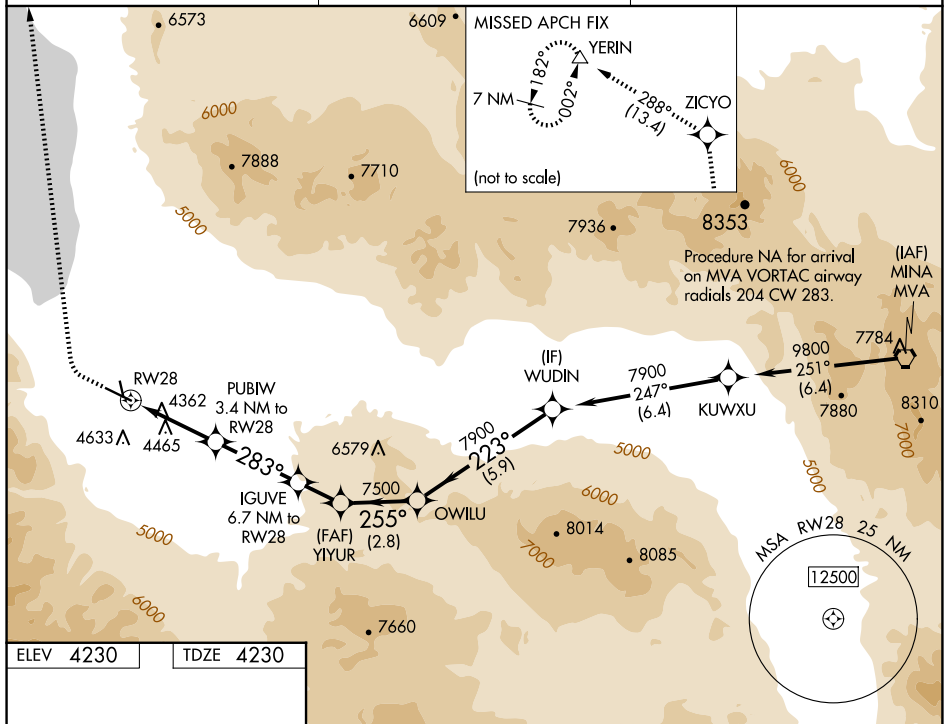
HAWTHORNE INDUSTRIAL (HTH)

T Circling NA to Rwy 15 and 33. When local altimeter setting not received, procedure NA. Circling NA south of Rwy 10-28.

A DME/DME RNP-0.3 NA. Rwy 28 helicopter visibility reduction below $\frac{3}{4}$ SM NA.

MISSED APPROACH: Climb to 4750 then climbing right turn to 10000 direct ZICYO and on track 288° to YERIN and hold.

AWOS-3 120.225	OAKLAND CENTER 125.75 284.65	UNICOM 122.8 (CTAF) 0
--------------------------	--	---------------------------------



4750 ↑	10000 ↗	ZICYO ✦	tr 288°	YERIN △	VGS1 and descent angles not coincident (VGS1 Angle 3.00/TCH 49).				
CATEGORY		A		B		C		D	
LP	MDA	4620-1	390 (400-1)			4620-1 $\frac{1}{8}$ 390 (400-1 $\frac{1}{8}$)		NA	
LN	MDA	4720-1	490 (500-1)			4720-1 $\frac{3}{8}$ 490 (500-1 $\frac{3}{8}$)		NA	
C	CIRCLING	4720-1	490 (500-1)			5680-3 1450 (1500-3)		NA	