

WAAS CH 65740 W24A	APP CRS 236°	Rwy Idg 6001 TDZE 4237 Apt Elev 4265
--	------------------------	---

RNAV (GPS) RWY 24

SILVER SPRINGS (SPZ)

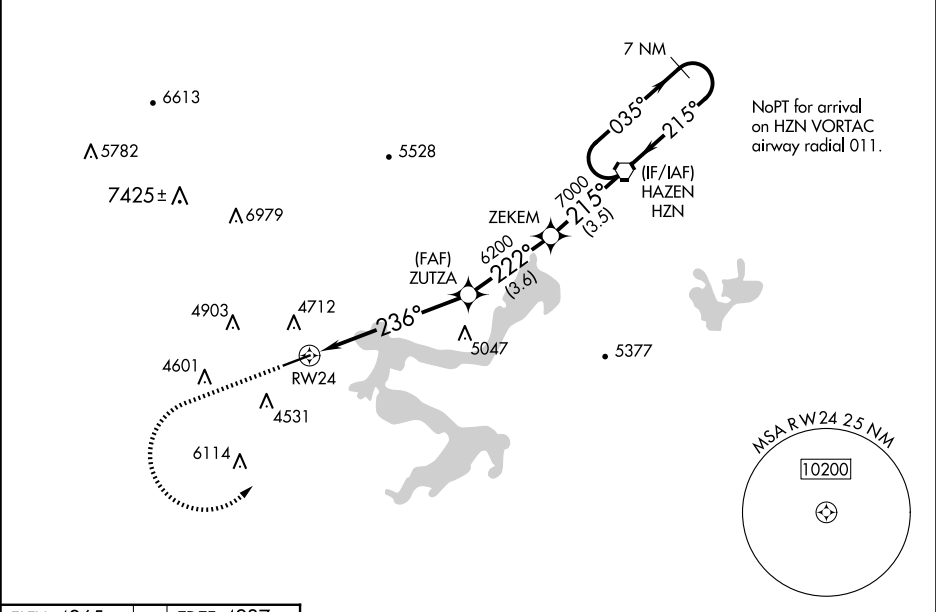
⚠

NA

For uncompensated Baro-VNAV systems, LNAV/VNAV NA below -23°C (-9°F) or above 54°C (130°F). DME/DME RNP-0.3 NA. Use Fallon NAS (Van Voorhis Fld) altimeter setting; when not received, use Reno/Tahoe Intl altimeter setting.

MISSED APPROACH: Climb to 6900 then climbing left turn to 9900 direct HZN VORTAC and hold, continue climb-in-hold to 9900.
*Missed approach requires minimum climb of 315 feet per NM to 6900.

AWOS-2 120.475	KNFL ATIS* 370.925	NAVY FALLON APP CON 120.85 360.2	CTAF 122.90
--------------------------	------------------------------	--	-----------------------



ELEV 4265

TDZE 4237

CATEGORY	A		B	C	D
LPV DA*	4593-1¼		356 (400-1¼)		NA
LPV DA	5007-3		770 (800-3)		NA
LNAV/VNAV DA	5209-4		972 (1000-4)		NA
LNAV MDA	5280-1¼ 1043 (1100-1¼)	5280-1½ 1043 (1100-1½)	5280-3 1043 (1100-3)		NA
CIRCLING	5280-1¼ 1015 (1100-1¼)	5620-1½ 1355 (1400-1½)	6040-3 1775 (1800-3)		NA

MIRL Rwy 6-24

REIL Rws 6 and 24