

RNAV (GPS) RWY 32

COTTONWOOD (P52)

MISSED APPROACH: Climbing right turn to 10000 direct MINGY and hold, continue climb-in-hold to 10000.

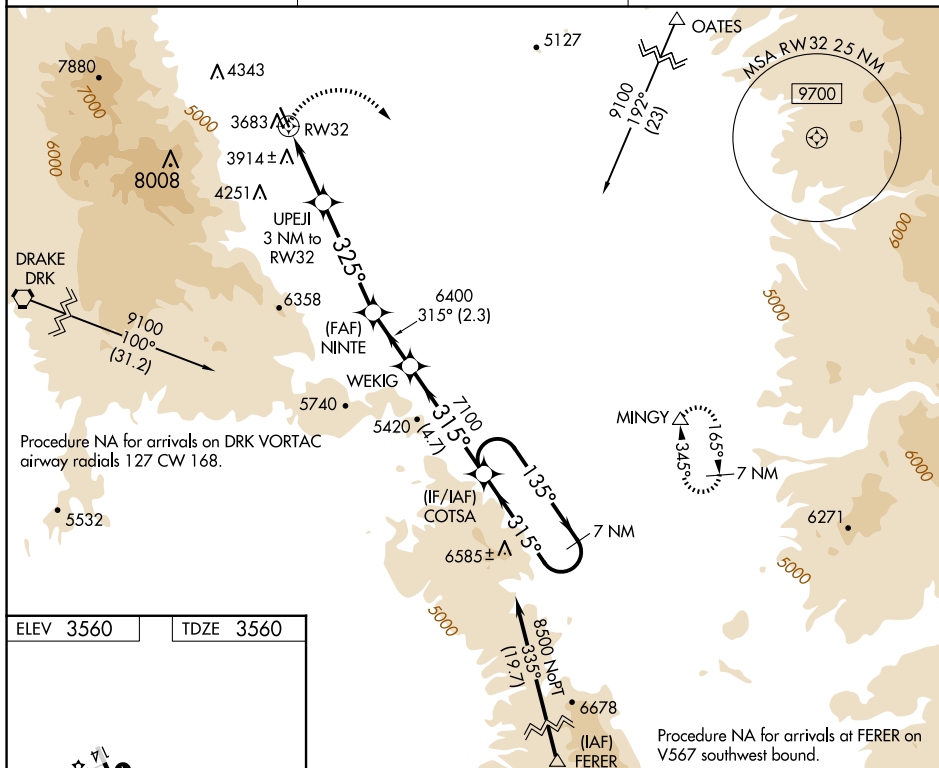
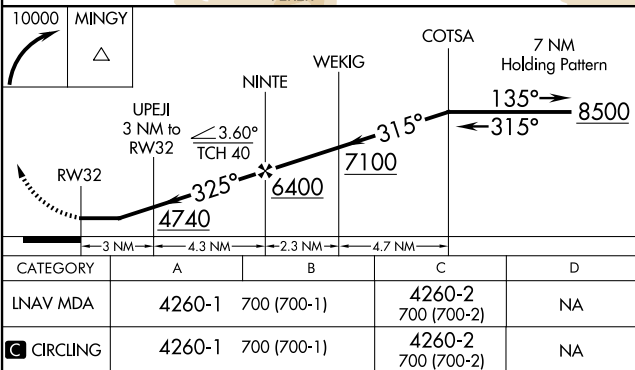
UNICOM
122.7 (CTAF) **L**

Diagram illustrating the runway layout for Runway 14-32. The runway is shown as a straight line with a 1.0° UP slope. The dimensions are 4250 X 75. The runway is labeled 14-32 at both ends. A 325° heading is indicated for the approach to Runway 32.



SW-4, 07 AUG 2025 to 04 SEP 2025