

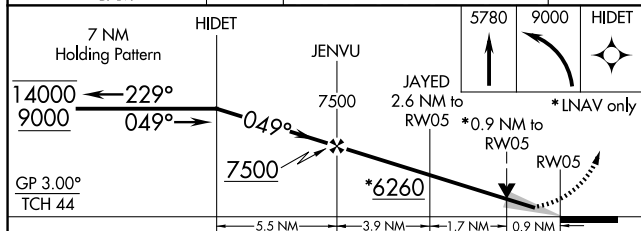
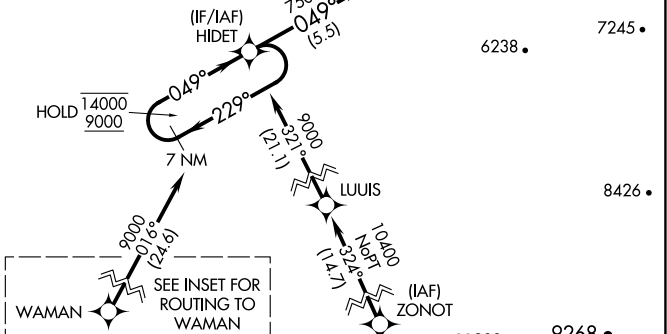
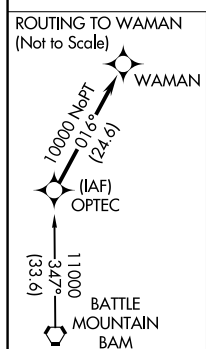
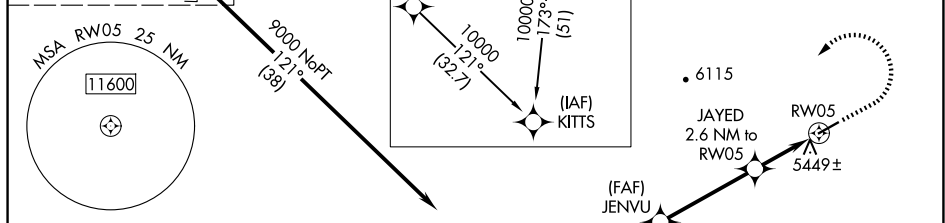
23110


RNAV (GPS) RWY 5  
OWYHEE (10U)

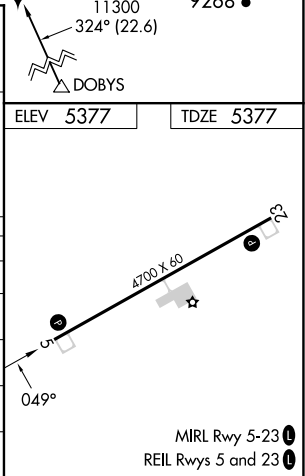
**T** Circling Cats C/D NA southeast of Rwy 5-23.  
**A** For uncompensated Baro-VNAV systems, LNAV/VNAV NA below -25°C or above 54°C.

**MISSED APPROACH:** Climb to 5780 then climbing left turn to 9000 direct HIDEET and hold, continue climb-in-hold to 9000.  
#Missed approach requires minimum climb of 250 feet per NM to 6500.

SEE INSET FOR ROUTING TO KITTS	(IAF) KITTS	ROUTING TO KITTS (Not to Scale)	HYVAL
		TABIO	



CATEGORY		A	B	C	D
LPV	DA	5577-1 200 (200-1)			
LNNAV/ VNAV	DA#	5627-1 250 (300-1)			
LNNAV/ VNAV	DA	5627-1 250 (300-1)	5909-1½ 532 (600-1½)	5922-1⅝ 545 (600-1⅝)	
LNNAV	MDA	5700-1 323 (400-1)			5960-1¾ 583 (600-1¾)
 CIRCLING		5760-1 383 (400-1)	5840-1 463 (500-1)	5840-1½ 463 (500-1½)	6860-3 1483 (1500-3)



OWYHEE (10U)  
RNAV (GPS) RWY 5

SW-4, 07 AUG 2025 to 04 SEP 2025