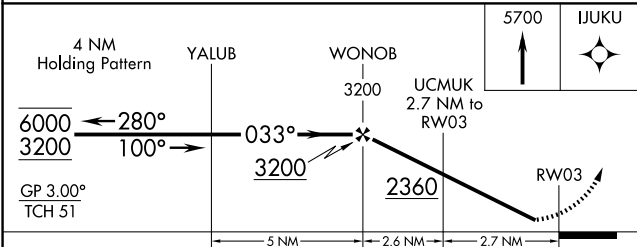
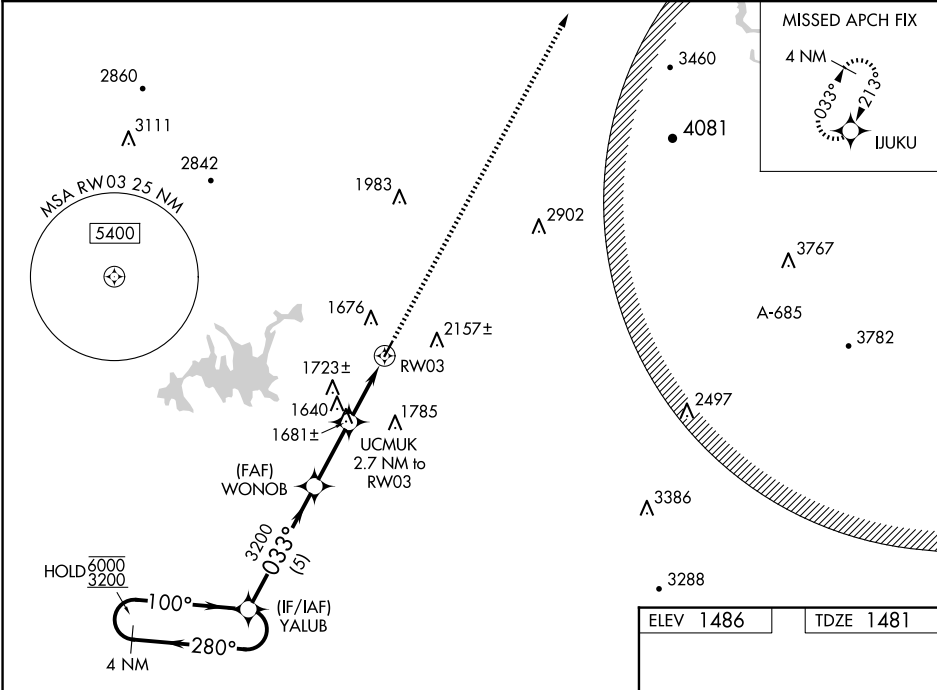


WAAS CH 45941 W03A	APP CRS 033°	Rwy Idg TDZE 1481 Apt Elev 1486
--	------------------------	---

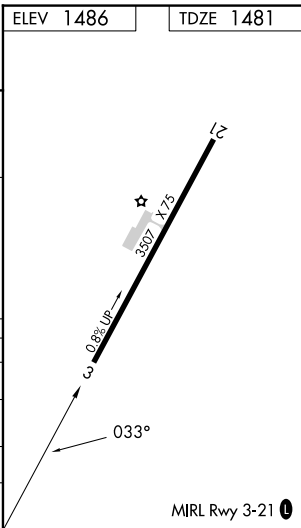
RNAV (GPS) RWY 3
GILMER COUNTY (49A)

RNP APCH - GPS.	MISSED APPROACH: Climb to 5700 direct IJUKU and hold, continue climb-in-hold to 5700.
-----------------	--

AWOS-3 118.075	ATLANTA CENTER 133.1 342.425	UNICOM 123.0 (CTAF)
--------------------------	--	-------------------------------



CATEGORY	A	B	C	D
LPV DA	1731-1	250 (300-1)		
LNNAV/VNAV DA	1922-1 3/8	441 (500-1 3/8)		
LNNAV MDA	1900-1	419 (500-1)	1900-1 1/8	419 (500-1 1/8)
CIRCLING	1980-1 494 (500-1)	2560-1 1/2 1074 (1100-1 1/2)	2560-3	1074 (1100-3)



SE-4, 07 AUG 2025 to 04 SEP 2025

SE-4, 07 AUG 2025 to 04 SEP 2025