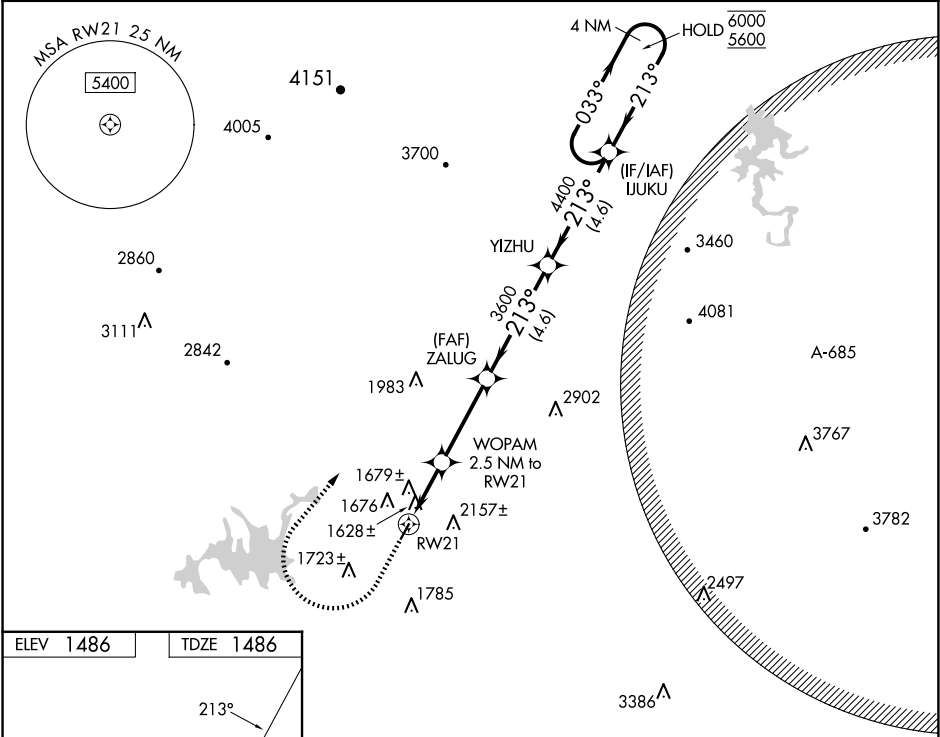


WAAS CH 86641 W21A	APP CRS 213°	Rwy Ldg TDZE Apt Elev	3507 1486 1486
--	------------------------	-----------------------------	---

RNAV (GPS) RWY 21
GILMER COUNTY (49A)

RNP APCH - GPS.		MISSED APPROACH: Climb to 2500 then climbing right turn to 5700 direct IJUKU and hold, continue climb-in-hold to 5700.
	Procedure NA at night. Rwy 21 helicopter visibility reduction below 1 SM NA.	
AWOS-3 118.075	ATLANTA CENTER 133.1 342.425	UNICOM 123.0 (CTAF)



0.2% UP

2307 x 75

2500

↑

5700

↗

IJUKU

✦

Visual Segment - Obstacles.

WOPAM

2.5 NM to RW21

ZALUG

✕

YIZHU

⊥

IJUKU

⊥

4 NM

Holding Pattern

033°

↗

6000

↖

213°

5600

213°

↖

4400

2.5 NM

3.4 NM

4.6 NM

4.6 NM

CATEGORY	A	B	C	D
LP MDA	1880-1	394 (400-1)	1880-1 $\frac{1}{8}$	394 (400-1 $\frac{1}{8}$)
LNAV MDA	1940-1	454 (500-1)	1940-1 $\frac{3}{8}$	454 (500-1 $\frac{3}{8}$)
CIRCLING	1980-1 494 (500-1)	2560-1 $\frac{1}{2}$ 1074 (1100-1 $\frac{1}{2}$)	2560-3	1074 (1100-3)

MIRL Rwy 3-21

0

MIRL Rwy 3-21

SE-4, 07 AUG 2025 to 04 SEP 2025

SE-4, 07 AUG 2025 to 04 SEP 2025