

APP CRS	Rwy Idg	4397
055°	TDZE	1270
	Apt Elev	1270

RNAV (GPS) RWY 5

HOLLEY MOUNTAIN AIRPARK (2A2)

RNP APCH - GPS.

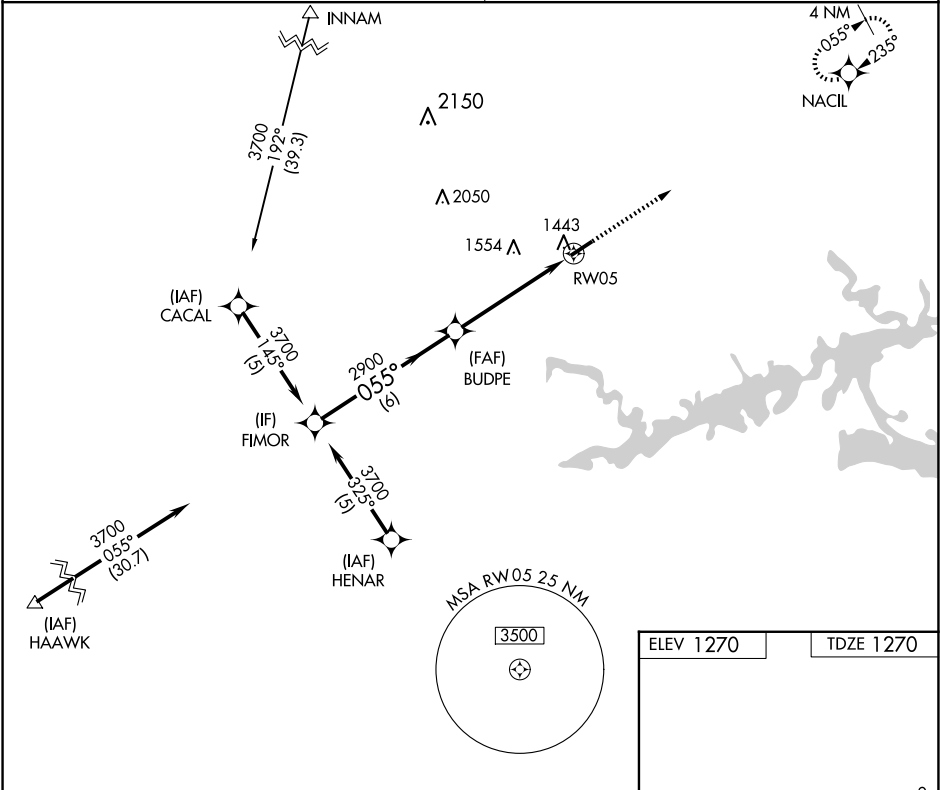
▼

NA

Rwy 5 helicopter visibility reduction below 1 SM NA. Straight-in Rwy 5 NA at night, Circling Rwy 5 NA at night. Obtain local altimeter setting on CTAf; when not received, use Marion County Rgnl altimeter setting and increase all MDAs 180 feet and LNAV visibilities Cat C ½ SM, and Circling visibility Cat C ¾ SM.

MISSED APPROACH: Climb to 3700 direct NACIL and hold.

MEMPHIS CENTER	UNICOM
126.85 281.55	122.7 (CTAF) 0



FIMOR		BUDPE		RWY05	
3700		2900		1443	
055°		3.00°		055°	
6 NM		5.1 NM		4795 X 50	
TCH 40		TCH 40		TCH 40	
CATEGORY	A	B	C	D	
LNAV MDA	1760-1	490 (500-1)	1760-1 3/8 490 (500-1 3/8)	NA	
CIRCLING	1800-1	530 (600-1)	1860-1 1/2 590 (600-1 1/2)	NA	

ELEV 1270

TDZE 1270

MIRL Rwy 5-23

REIL Rwy 5 and 23

SC-1, 07 AUG 2025 to 04 SEP 2025

SC-1, 07 AUG 2025 to 04 SEP 2025