

APP CRS
257°

Rwy Idg
5000

TDZE
890

Apt Elev
890

RNAV (GPS) RWY 26

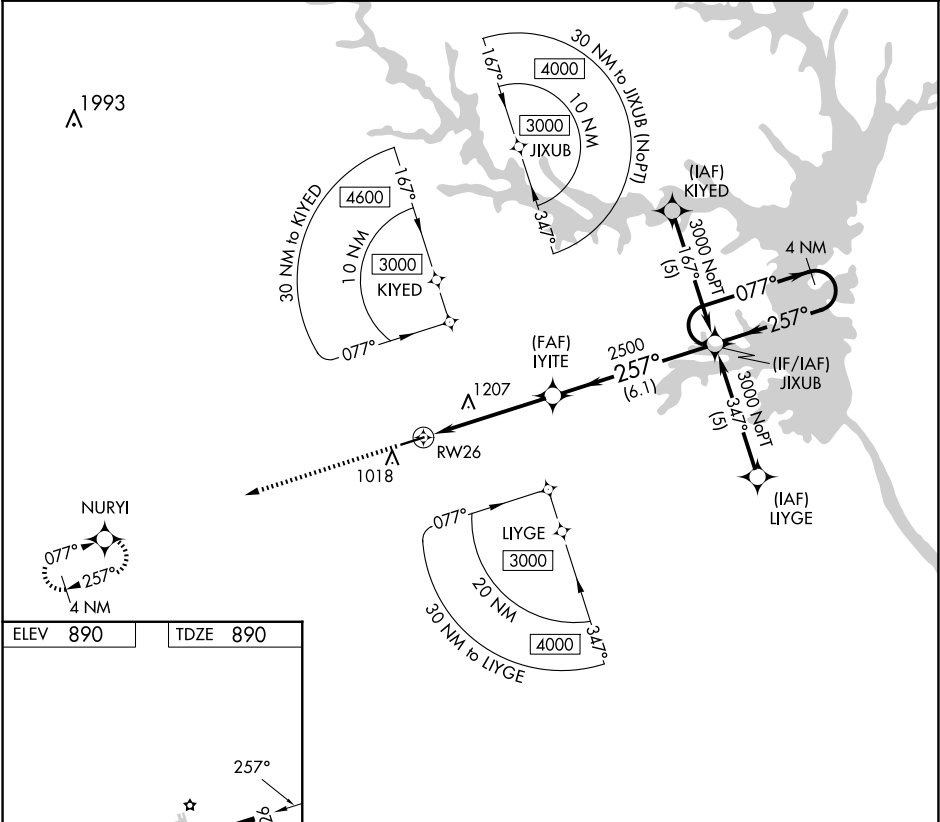
FRANKLIN-HART (18A)

RNP APCH.

When local altimeter setting not received, use Toccoa altimeter setting.
Rwy 26 helicopter visibility reduction below 3/4 SM NA.

MISSED APPROACH: Climb to 3000 direct NURYI and hold.

AWOS-3PT 118.625	ATLANTA CENTER 127.5 316.05	CTAF 122.9
---------------------	--------------------------------	---------------



ELEV 890

TDZE 890

MIRL Rwy 8-26

1.2% UP

5000 X 75

257°

26

3000

NURYI

VGSI and descent angles not coincident
(VGSI Angle 3.00/TCH 23).

4 NM Holding Pattern

JIXUB

077°

257°

3000

1.8 NM to RW26

3.04° TCH 40

2500

1.8

3.1 NM

6.1 NM

CATEGORY	A	B	C	D
LNAV MDA	1520-1	630 (700-1)	1520-1 3/4 630 (700-1 3/4)	1520-2 630 (700-2)

SE-4, 07 AUG 2025 to 04 SEP 2025

SE-4, 07 AUG 2025 to 04 SEP 2025