

WAAS CH 90531 W07A	APP CRS 068°	Rwy Idg TDZE Apt Elev	5001 653 653
--	------------------------	-----------------------------	---

RNAV (GPS) RWY 7

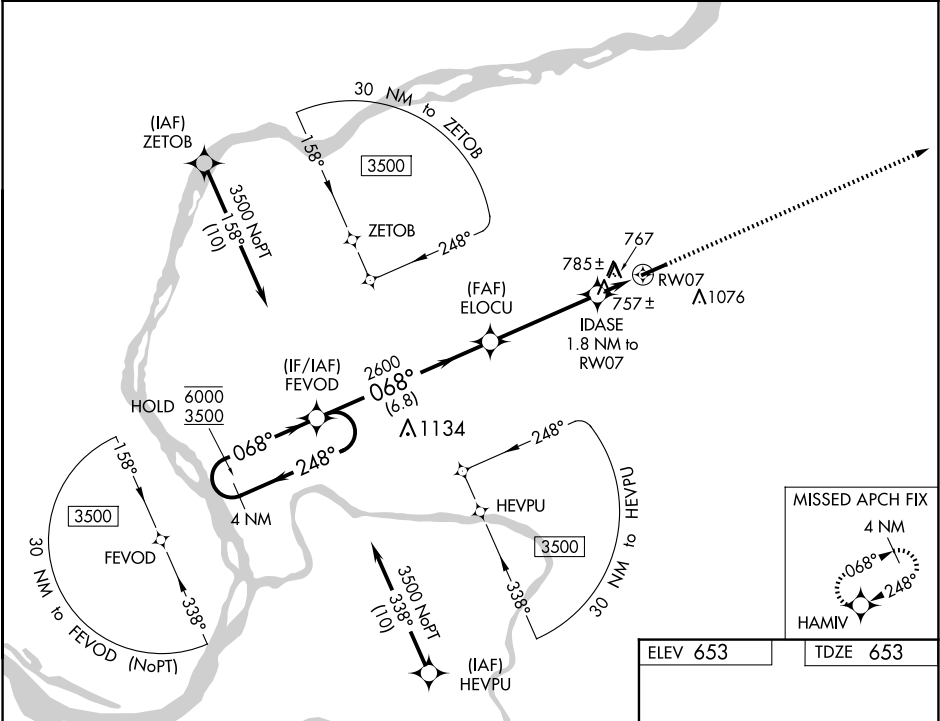
MARION-CRITTENDEN COUNTY JAMES C JOHNSON RGNL (GDA)

RNP APCH - GPS.

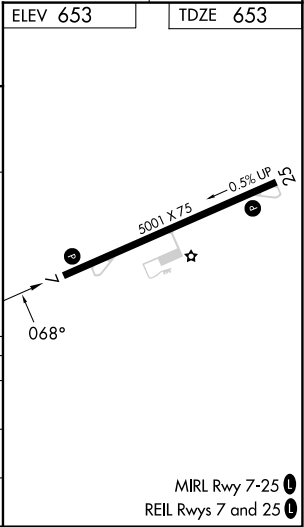
Rwy 7 helicopter visibility reduction below ¾ SM NA.

MISSED APPROACH:
Climb to 3500 direct
HAMIV and hold.

AWOS-3P 118.15	MEMPHIS CENTER 133.65 292.15	CTAF 122.9
--------------------------	--	----------------------



4 NM Holding Pattern FEVOD		3500 HAMIV	
6000 ← 248°		↑	
3500 → 068°		✧	
2600		IDASE 1.8 NM to RW07	
3.00° TCH 40		1 NM to RW07	
6.8 NM		0.8 NM	
A		D	
CATEGORY	A	B	C
LP MDA	1020-1		367 (400-1)
LNAV MDA	1040-1	387 (400-1)	1040-1½ 387 (400-1½)
CIRCLING	1160-1 507 (600-1)	1360-1 707 (800-1)	1380-2 727 (800-2)



RNAV (GPS) RWY 7

SE-1, 07 AUG 2025 to 04 SEP 2025

SE-1, 07 AUG 2025 to 04 SEP 2025

MIRL Rwy 7-25
REIL Rwy 7 and 25