

MARION, KENTUCKY

AL-9833 (FAA)

23334

WAAS CH 86631 W25A	APP CRS 248°	Rwy Idg 5001 TDZE 643 Apt Elev 653
--	------------------------	---

RNAV (GPS) RWY 25

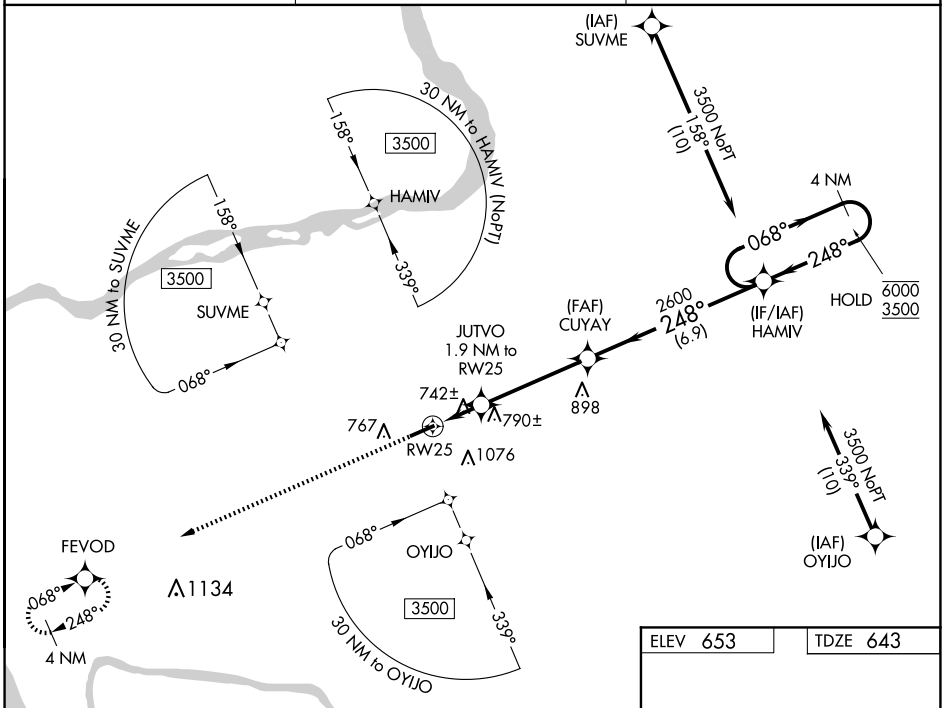
RNP APCH - GPS.

T For uncompensated Baro-VNAV systems, LNAV/VNAV NA below -16°C
A or above 54°C.

MISSED APPROACH: Climb to 3500 direct FEVOD and hold.

AWOS-3P
118.15

MEMPHIS CENTER
133.65 292.15

CTAF
122.9 **L**

3500 FEVD VGS and RNAV glidepath not coincident (VGS Angle 3.00/TCH 36).

4 NM Holding Pattern

HAMIV

068° → 6000
← 248° 3500

JUTVO 1.9 NM to RW25

CUYAY 2600

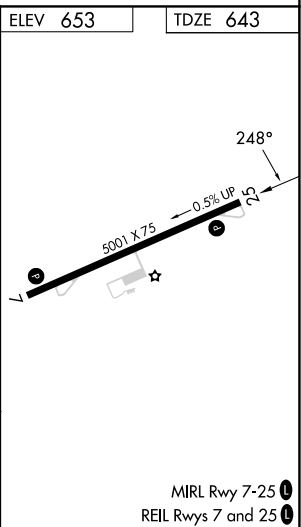
1.1 NM to RW25

1260 2600

GP 3.00° TCH 40

1.1 0.8 4.2 NM 6.9 NM

CATEGORY	A	B	C	D
LPV DA	893-1		250 (300-1)	
LNAV/DA VNAV	945-1		302 (300-1)	
LNAV MDA	1000-1		357 (400-1)	
C CIRCLING	1160-1 507 (600-1)	1360-1 707 (800-1)	1380-2 727 (800-2)	1380-2¼ 727 (800-2¼)

MARION, KENTUCKY
Amdt 3A 30NOV23

MARION-CRITTENDEN COUNTY JAMES C JOHNSON RGNL (GDA)
37°20'N - 88°07'W RNAV (GPS) RWY 25

RNAV (GPS) RWY 25

SE-1, 07 AUG 2025 to 04 SEP 2025