

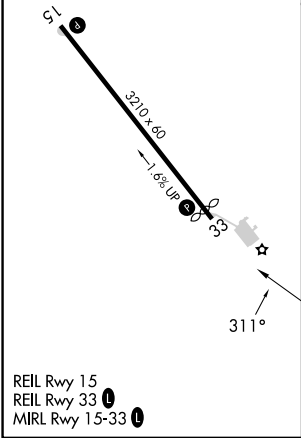
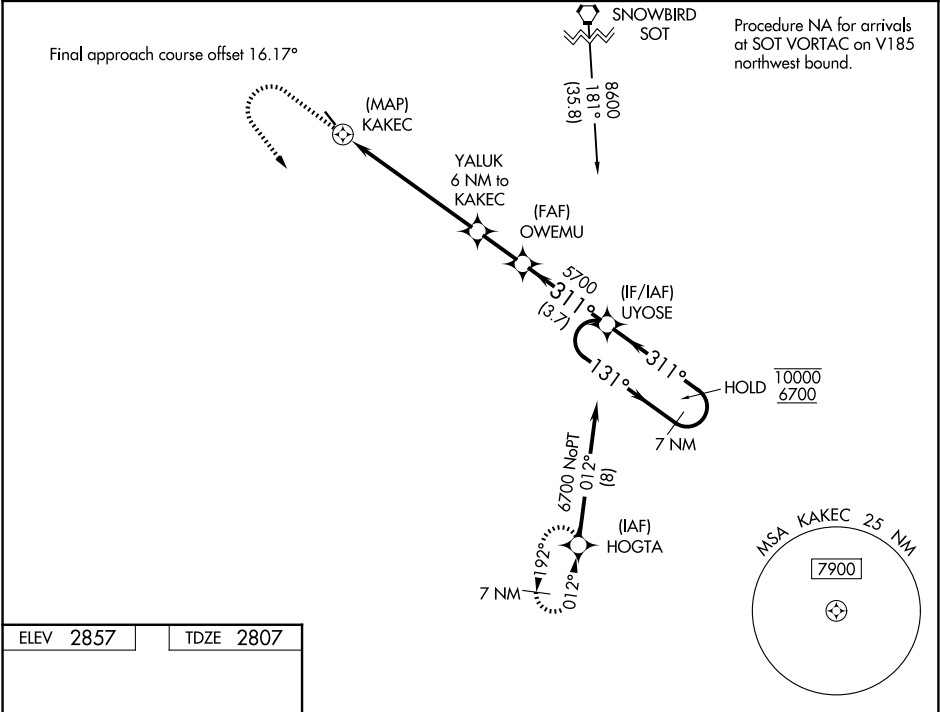
APP CRS	Rwy Ldg	3060
311°	TDZE	2807
	Apt Elev	2857

RNAV (GPS) RWY 33

JACKSON COUNTY (24A)

RNP APCH.	MISSED APPROACH: Climb to 5000 then climbing left turn to 8000 direct HOGTA and hold.
▼ Procedure NA at night. ▲ Rwy 33 helicopter visibility reduction below 1 SM NA. ❄ -13°C	

AWOS-3PT 118.9	ATLANTA CENTER 134.8 379.95	UNICOM 123.0 (CTAF) 0
-------------------	--------------------------------	--------------------------



5000	8000	HOGTA	Visual segment - Obstacles.			
↑	↩	✦	UYOSE 7 NM Holding Pattern			
KAKEC			OWEMU	YALUK 6 NM to KAKEC	5700	131° 10000 6700
5020			311°	311°	7 NM	
0.5			6 NM	2 NM	3.7 NM	
CATEGORY	A	B	C	D		
LNAV MDA	4360-1¼ 1553 (1600-1¼)	4360-1½ 1553 (1600-1½)	NA			
CIRCLING	4360-1¼ 1503 (1600-1¼)	4520-1½ 1663 (1700-1½)	NA			