

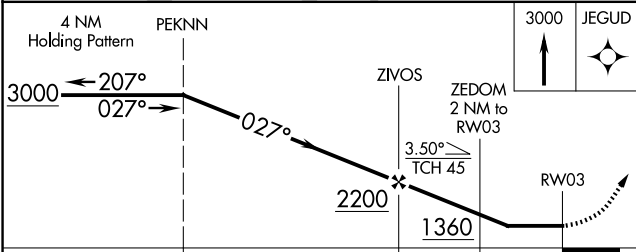
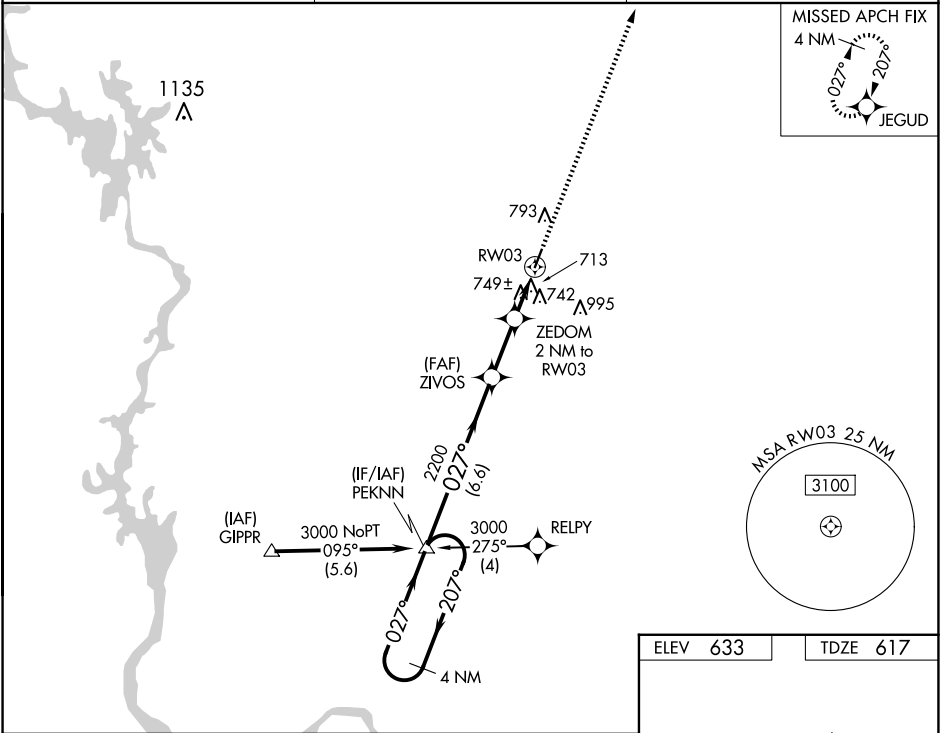
WAAS CH 61235 W03A	APP CRS 027°	Rwy Idg 4002 TDZE 617 Apt Elev 633
--	------------------------	---

RNAV (GPS) RWY 3

MONTGOMERY COUNTY (43A)

RNP APCH-GPS.	Use Asheville altimeter setting; when not received, use Albemarle altimeter setting. Circling Rwy 21 NA at night. Rwy 3 helicopter visibility reduction below ¾ SM NA.	MISSED APPROACH: Climb to 3000 direct JEGUD and hold.
---------------	---	---

HBI AWOS-3 119.275	FAYETTEVILLE APP CON 127.8 343.725	UNICOM 122.8 (CTAF) 0
------------------------------	--	---------------------------------



CATEGORY	A	B	C	D
LP MDA	1060-1	443 (500-1)	NA	NA
LNAV MDA	1080-1	463 (500-1)	NA	NA
CIRCLING	1240-1 607 (700-1)	1340-1 707 (800-1)	NA	NA

