

APP CRS  
**051°**

Rwy Idg  
TDZE  
**226**

**3603**  
Apt Elev  
**231**

**RNAV (GPS) RWY 5**  
BAMBERG COUNTY (99N)

RNP APCH.

▼

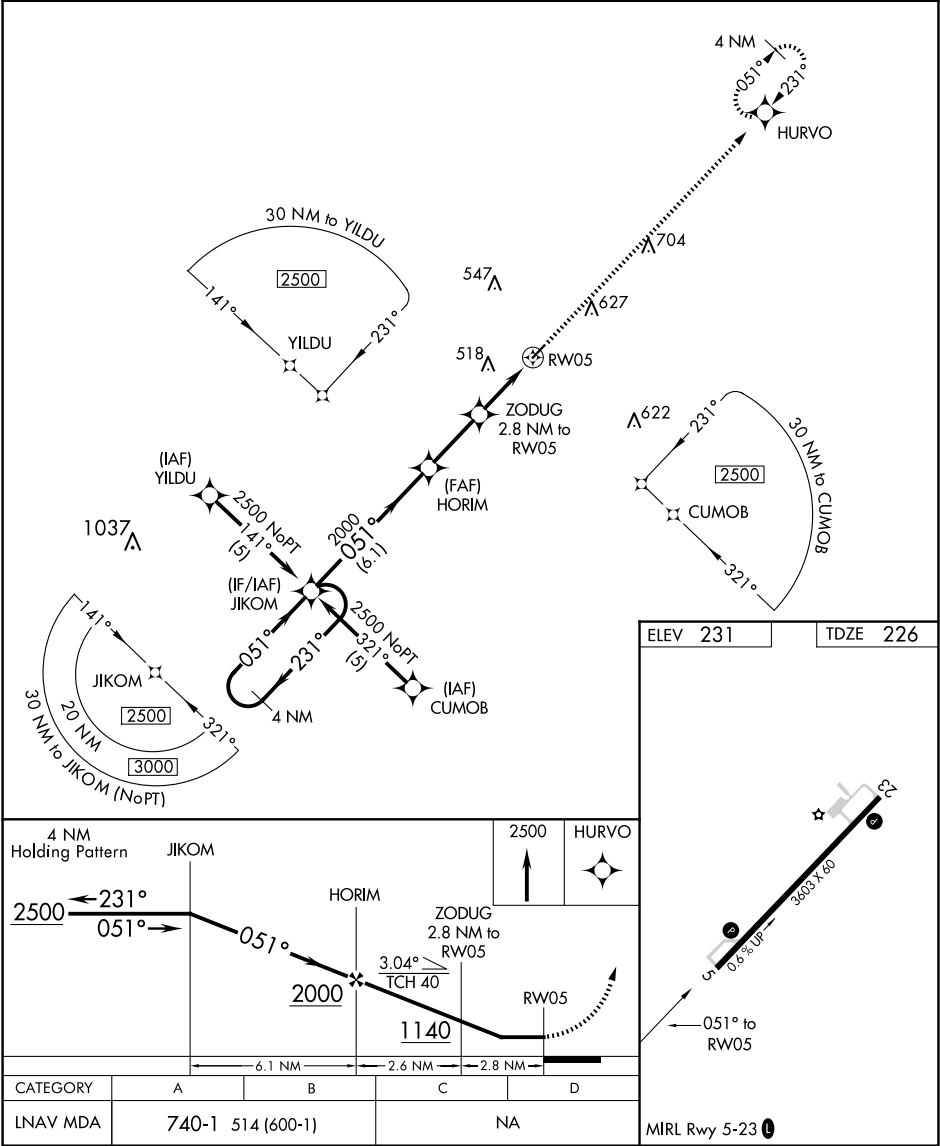
▲ NA

Procedure NA at night.  
Rwy 5 helicopter visibility reduction below 1 SM NA.  
Use Orangeburg Muni altimeter setting; when not received, procedure NA.

MISSED APPROACH: Climb to 2500  
direct HURVO and hold.

COLUMBIA APP CON  
**124.15 338.2**

UNICOM  
**122.8 (CTAF) 0**



SE-2, 07 AUG 2025 to 04 SEP 2025

SE-2, 07 AUG 2025 to 04 SEP 2025