

RNP APCH - GPS.

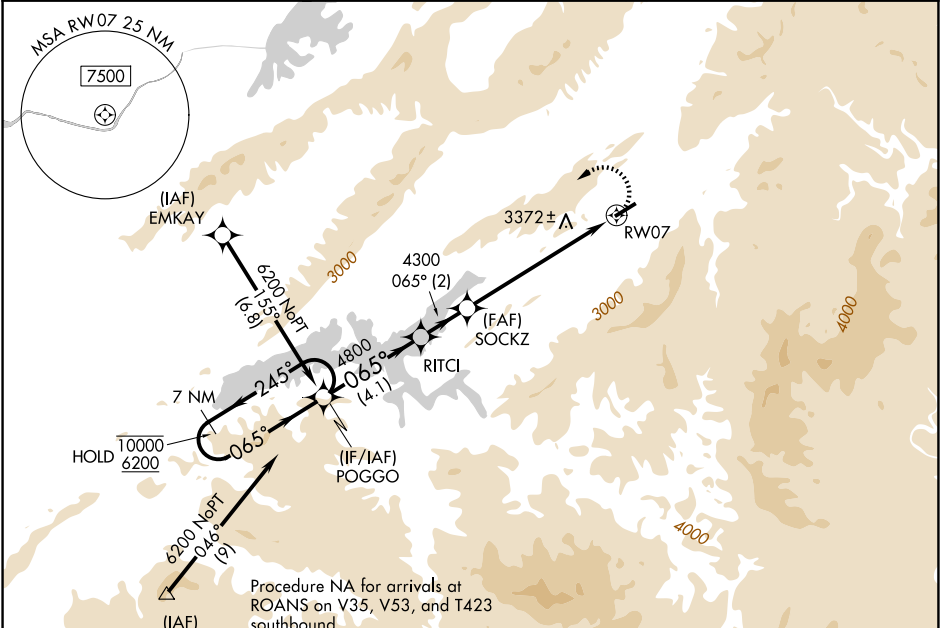
NA

-9°C

Rwy 7 helicopter visibility reduction below 1 SM NA. Circling NA for Cat C south of Rwy 7-25. When local altimeter setting not received, use Abingdon altimeter setting and increase all MDAs 80 feet. Circling NA for Cats B and C when using Abingdon altimeter setting. Procedure NA at night.

MISSED APPROACH:
Climbing left turn to 6200 direct POGGO and hold.

AWOS-3 126.225	TRI-CITY APP CON ★ 134.425 349.0	UNICOM 122.7 (CTAF)
-------------------	-------------------------------------	------------------------



ELEV 2241

TDZE 2240

7 NM Holding Pattern

POGGO

Visual Segment - Obstacles.

6200 POGGO

10000 6200 245° 065° 065°

RITCI

SOCKZ

4800

4300

RW07

4.1 NM 2 NM 6.3 NM

4498 X.75

065°

CATEGORY	A	B	C	D
LNNAV MDA	4040-1¼ 1800 (1800-1¼)	4040-1½ 1800 (1800-1½)	4040-3 1800 (1800-3)	
CIRCLING	4040-1¼ 1799 (1800-1¼)	4260-1½ 2019 (2100-1½)	4260-3 2019 (2100-3)	NA